



**PRODUCT
CATALOGUE
No. 48**

COLOUR FILTERS

Swatchbooks	.3
Supergel	.4
Roscolux	.6
E-Colour+	.8
Cinegel	.10
RoscoView	.18
RoscoShades	.19
Cinegel Kits	.20
Permacolor	.21
Filter Accessories	.23

BACKDROPS/DIGITAL IMAGING .24

GOBOS

Steel	.26
Glass	.28
Gobo Accessories	.32

LIGHTING EQUIPMENT

X24 X-Effects Projector	.34
Vortex 360 Dual Rotator	.35
Gobo Rotators	.36
Controllers	.37
Infinity	.38
I-Cue Intelligent Mirror	.39
LitePad	.40
Power Supply Units	.41

PROJECTION EQUIPMENT

iPro Image Projector	.42
----------------------	-----

LIGHTING DESIGN/CONTROL

Keystroke	.44
-----------	-----

SCREENS .45

FOG

Fog Machines	.46
Fog Fluids	.52

PAINT

Scenic Paints	.54
Coatings and Glazes	.58
Roscoflamex	.60
Paint Accessories	.61
Digital Compositing	.62
TV/Video Paints	.63

STAGE HARDWARE .64

FLICKER CANDLES .65

FLOOR PRODUCTS

Floors	.66
Floor Accessories	.70

TAPES .71

DESIGNER PRODUCTS .72

INDEX .76

THE ROSCO SALES TEAM .78

SWATCHBOOKS

Colour filter swatchbooks have been, for many years, the lighting designer's favourite tool for colour filter selection. Available at Rosco dealers everywhere, the swatchbooks contain samples of every colour and its transmission chart. All Rosco swatchbooks are dated and users are advised to have an up-to-date swatchbook on hand. Contact Rosco or your nearest dealer for a free swatchbook.

The Designer Colour Selector and Lightlab Editions will have a charge. Contact Rosco for pricing.

Supergel

No. 99101 Supergel Swatchbook
 No. 99018 Supergel Designer Colour Selector
 approximate size
 7.5cm x 15.24cm cm.



Roscolux

No. 9979 Roscolux Swatchbook
 No. 990109 Roscolux Designer Colour Selector
 approximate size 7.5cm x 15.24cm



The **E-Colour+** swatchbook now includes the 5000 series.

No. 99064 E-Colour+ swatchbook (chromatic)
 No. 99064N E-Colour+ swatchbook (numeric)
 No. 990611 E-Colour+ Designer Colour Selector
 approximate size 7.5cm x 15.24cm



The **Cinegel** swatchbook includes four ranges, the original Cinegel, Calcolor, the Storaro Selection and Cinelux.

No. 993038N Cinegel swatchbook
 No. 99060 Cinegel Designer Colour Selector
 approximate size 7.5cm x 15.24cm



The **Permacolor swatchbook** is 15cm x 8.5cm containing filter approximations of the Rosco dichroic filter.

No. 950SBPRM0306 Permacolor swatchbook



Light Lab Edition

This edition contains a 16.5cm x 30.5cm sample of each colour and diffusion. Users will find all the familiar data, such as a wavelength chart and transmission data printed on the full size sheets behind each filter.

In addition to the colours, each book is equipped with two Rosco safety frames, 15.87cm and 19.05cm, a plastic pouch for saving cut gel, and a Rosco gel marker.

- No. 950 SBLES 0612 Supergel Light Lab Edition
- No. 950 SBLEL 0612 Roscolux LightLab Edition
- No. 950 SBLEC 0612 Cinegel Light Lab Edition
- No. 950 SBLEE 0612 E-Colour+ Light Lab Edition



COLOURS

Sheets: 50cm x 61cm

Rolls: 61cm x 7.62m

Supergel, the most widely used colour filter range in the world, currently offers 144 colours and diffusers. Its popularity is due partly to the wide choice of colours, but also because this engineered plastic is one of Rosco's most durable filters available.

The entire range of colours is tri-extruded (three rolls of plastic film extruded simultaneously) on a polycarbonate base. The result is a "sandwich" in which two microscopically thin layers of clear film protect a layer of colour. This protection was specifically designed to ensure the longest possible life under the intense heat of stage or television lights.

The unique construction and smooth polycarbonate finish also make Supergel the first choice when building colour strings for scrollers.



No. Colour

- 00 Clear
- 01 Light Bastard Amber
- 02 Bastard Amber
- 03 Dark Bastard Amber
- 303 Warm Peach
- 04 Medium Bastard Amber
- 304 Pale Apricot
- 05 Rose Tint
- 305 Rose Gold
- 06 No Color Straw
- 07 Pale Yellow
- 09 Pale Amber Gold
- 10 Medium Yellow
- 11 Light Straw
- 312 Canary
- 13 Straw Tint
- 313 Light Relief Yellow
- 14 Medium Straw
- 15 Deep Straw
- 317 Apricot
- 318 Mayan Sun
- 19 Fire
- 20 Medium Amber
- 21 Golden Amber
- 22 Deep Amber
- 23 Orange
- 24 Scarlet
- 25 Orange Red
- 26 Light Red
- 27 Medium Red
- 30 Light Salmon Pink
- 324 Gypsy Red
- 31 Salmon Pink
- 331 Shell Pink
- 32 Medium Salmon Pink
- 332 Cherry Rose
- 33 No Color Pink
- 35 Light Pink
- 36 Medium Pink

No. Colour

- 336 Billington Pink
- 337 True Pink
- 39 Skelton Exotic Sangria
- 339 Broadway Pink
- 40 Light Salmon
- 342 Rose Pink
- 43 Deep Pink
- 343 Neon Pink
- 344 Follies Pink
- 45 Rose
- 46 Magenta
- 346 Tropical Magenta
- 47 Light Rose Purple
- 347 Belladonna Rose
- 48 Rose Purple
- 348 Purple Jazz
- 49 Medium Purple
- 349 Fisher Fuchsia
- 50 Mauve
- 351 Lavender Mist
- 52 Light Lavender
- 53 Pale Lavender
- 353 Lilly Lavender
- 54 Special Lavender
- 55 Lilac
- 355 Pale Violet
- 56 Gypsy Lavender
- 356 Middle Lavender
- 57 Lavender
- 357 Royal Lavender
- 58 Deep Lavender
- 358 Rose Indigo
- 59 Indigo
- 359 Medium Violet
- 61 Mist Blue
- 361 Hemsley Blue

No. Colour

- 62 Booster Blue
- 63 Pale Blue
- 363 Aquamarine
- 64 Light Steel Blue
- 65 Daylight Blue
- 66 Cool Blue
- 366 Jordan Blue
- 67 Light Sky Blue
- 367 Slate Blue
- 68 Parry Sky Blue
- 368 Winkler Blue
- 69 Brilliant Blue
- 369 Tahitian Blue
- 70 Nile Blue
- 370 Italian Blue
- 71 Sea Blue
- 72 Azure Blue
- 73 Peacock Blue
- 371 Theatre Booster 1
- 372 Theatre Booster 2
- 373 Theatre Booster 3
- 74 Night Blue
- 374 Sea Green
- 75 Twilight Blue
- 377 Iris Purple
- 76 Light Green Blue
- 78 Trudy Blue
- 79 Bright Blue
- 80 Primary Blue
- 81 Urban Blue
- 82 Surprise Blue
- 382 Congo Blue
- 83 Medium Blue
- 383 Sapphire Blue

COLOURS

Sheets: 50cm x 61cm

Rolls: 61cm x 7.62m

No.	Colour
84	Zephyr Blue
384	Midnight Blue
85	Deep Blue
385	Royal Blue
86	Pea Green
386	Leaf Green
388	Gaslight Green
89	Moss Green
389	Chroma Green
90	Dark Yellow Green
91	Primary Green
392	Pacific Green
93	Blue Green
393	Emerald Green
94	Kelly Green
95	Medium Blue Green
395	Teal Green
96	Lime
398	Neutral Grey



Catfish Row, by Ken Billington, using Supergel 83, Supergel 33 and Supergel 372

Supergel Diffusion

Sheets: 50cm x 61cm

Rolls: 61cm x 7.62m

No.	Name	No.	Name	No.	Name
100	Frost	120	Red Diffusion	127	Amber Cyc Silk
101	Light Frost	121	Blue Diffusion	132	1/4 Hamburg Frost
104	Tough Silk	122	Green Diffusion	140	Subtle Hamburg Frost
113	Matte Silk	124	Red Cyc Silk	160	Light Tough Silk
114	Hamburg Frost	125	Blue Cyc Silk		
119	Light Hamburg Frost	126	Green Cyc Silk		



David Taylors lighting design, shows Supergel Diffusion in use. Shown here in conjunction with Rosco fog.

Supergel complies with European non-flammability tests;
 UK - BS3944 part1,
 France - M1,
 Spain - M2,
 Austria - MA39,
 Germany - B1 (DIN 4102-01),
 Italy - C1.

COLOURS

Sheets: 1,2m x 53cm

Half Sheets: 61cm x 53cm

Rolls: 1,2m x 7.62m

Roscolux is the most widely used colour filter for theatre, film, television, live entertainment, retail and architectural applications. Developed with the top lighting designers in the industry, Roscolux is the first choice of designers who appreciate the wide choice of unique colours and diffusers, a colour palette second to none.

Roscolux filters are produced using an advanced deep-dyed processes. This processes allows for a colour filter that withstands the rigours of use, controlled colour tolerance, meets or surpasses flammability standards and is RoHS compliant.

For more information detailing the manufacturing process, technical specifications and application guidelines, please visit the Rosco website.



No.	Colour	No.	Colour	No.	Colour
00	Clear	103	Tough Frost	3203	Three Quarter Blue
02	Bastard Amber	104	Tough Silk	3204	Half Blue
06	No Color Straw	105	Tough Spun	3206	Third Blue
08	Pale Gold	106	Light Tough Spun	3208	Quarter Blue
12	Straw	111	Tough Rolux	3216	Eighth Blue
16	Light Amber	112	Opal Tough Frost	3220	Double Blue
17	Light Flame	115	Light Tough Rolux	3304	Tough Plus Green
18	Flame	116	Tough White Diffusion	3308	Tough Minus Green
21	Golden Amber	117	Tough 1/2 White Diffusion	3313	Tough 1/2 Minus Green
23	Orange	118	Tough 1/4 White Diffusion	3314	Tough 1/4 Minus Green
26	Light Red	160	Light Tough Silk	3315	Tough 1/2 Plus Green
33	No Color Pink	162	Light Opal	3316	Tough 1/4 Plus Green
34	Flesh Pink	163	Powder Frost	3317	Tough 1/8 Plus Green
37	Pale Rose Pink	302	Pale Bastard Amber	3318	Tough 1/8 Minus Green
39	Skelton Extotic Sangria	310	Daffodil	3405	Roscosun 85N.3
41	Salmon	316	Gallo Gold	3406	Roscosun 85N.6
42	Deep Salmon	318	Mayan Sun	3407	Roscosun CTO
44	Middle Rose	321	Soft Golden Amber	3408	Roscosun 1/2 CTO
47	Light Rose Purple	325	Henna Sky	3409	Roscosun 1/4 CTO
51	Surprise Pink	333	Blush Pink	3410	Roscosun 1/8 CTO
59	Indigo	360	Clearwater	3411	Roscosun 3/4 CTO
60	No Color Blue	362	Tipton Blue	3441	Full Straw (CTS)
62	Booster Blue	364	Blue Bell	3442	Half Straw (1/2 CTS)
65	Daylight Blue	365	Tharon Delft Blue	3443	Quarter Straw (1/4 CTS)
77	Green Blue	375	Cerulean Blue	3444	Eighth Straw (1/8 CTS)
80	Primary Blue	376	Bermuda Blue	1991	Super Heat Shield
83	Medium Blue	378	Alice Blue	1995	Thermashield
87	Pale Yellow Green	381	Baldassari Blue	3114	UV Filter
88	Light Green	397	Pale Grey		
89	Moss Green	2002	Storaro Orange		
91	Primary Green	2003	Storaro Yellow		
92	Turquoise	2004	Storaro Green		
93	Blue Green	2005	Storaro Cyan		
97	Light Grey	2007	Storaro Blue		
98	Medium Grey	2008	Storaro Indigo		
99	Chocolate	2009	Storaro Violet		
102	Light Tough Frost	3202	Full Blue		

No.	Colour
4215	15 Blue
4230	30 Blue
4260	60 Blue
4290	90 Blue
4307	7.5 Cyan
4315	15 Cyan
4330	30 Cyan
4360	60 Cyan
4390	90 Cyan
4415	15 Green
4430	30 Green
4460	60 Green
4490	90 Green
4515	15 Yellow
4530	30 Yellow
4560	60 Yellow
4590	90 Yellow
4615	15 Red
4630	30 Red
4660	60 Red
4690	90 Red
4715	15 Magenta
4730	30 Magenta
4760	60 Magenta
4790	90 Magenta
4815	15 Pink
4830	30 Pink
4860	60 Pink
4890	90 Pink
4915	15 Lavender
4930	30 Lavender
4960	60 Lavender
4990	90 Lavender



Chykowski: Clean House



Baldassari: Blast II



Stanley: Dangerous Liaisons

E-Colour+ filters are available in 1.22m x 7.62m rolls as well as 61cm x 53cm and 1.22m x 53cm sheets

Rosco's comprehensive system of European colour filters for film, theatre and video production. E-Colour+ includes different filters and materials for colour correction, colour effects, diffusion and reflection. They're manufactured with the latest dye formulations and bonding technology to assure the highest levels of reliability. E-Colour+ complies with flammability test BS4944 pt1.



COLOUR EFFECTS FILTERS

No. Colour

002	Rose Pink
003	Lavender Tint
004	Medium Bastard Amber
007	Pale Yellow
008	Dark Salmon
009	Pale Amber Gold
010	Medium Yellow
013	Straw Tint
015	Deep Straw
017	Surprise Peach
019	Fire
020	Medium Amber
021	Gold Amber
022	Dark Amber
024	Scarlet
025	Sunset Red
026	Bright Red
027	Medium Red
029	Plasa Red
035	Light Pink
036	Medium Pink
039	Pink Carnation
046	Dark Magenta
048	Rose Purple
049	Medium Purple
052	Light Lavender
058	Lavender
061	Mist Blue
063	Pale Blue
068	Sky Blue
071	Tokyo Blue
075	Evening Blue
079	Just Blue
085	Deeper Blue
088	Lime Green
089	Moss Green
090	Dark Yellow Green
100	Spring Yellow
103	Straw
101	Yellow
102	Light Amber
104	Deep Amber
105	Orange
106	Primary Red
107	Light Rose
108	English Rose
109	Light Salmon

No. Colour

110	Middle Rose
111	Dark Pink
113	Magenta
115	Peacock Blue
16	Medium Blue Green
117	Steel Blue
118	Light Blue
119	Dark Blue
120	Deep Blue
121	Leaf Green
122	Fern Green
124	Dark Green
126	Mauve
127	Smokey Pink
128	Bright Pink
131	Marine Blue
132	Medium Blue
134	Golden Amber
135	Deep Golden Amber
136	Pale Lavender
137	Special Lavender
138	Pale Green
139	Primary Green
140	Summer Blue
141	Bright Blue
142	Pale Violet
143	Pale Navy Blue
144	No Colour Blue
147	Apricot
148	Bright Rose
151	Gold Tint
152	Pale Gold
153	Pale Salmon
154	Pale Rose
156	Chocolate
157	Pink
158	Deep Orange
159	No Color Straw
161	Slate Blue
162	Bastard Amber

No. Colour

164	Flame Red
165	Daylight Blue
166	Pale Red
169	Lilac Tint
170	Deep Lavender
172	Lagoon Blue
174	Dark Steel Blue
176	Loving Amber
179	Chrome Orange
180	Dark Lavender
181	Congo Blue
183	Moonlight Blue
182	Light Red
184	Cosmetic Peach
185	Cosmetic Burgundy
186	Cosmetic Silver Rose
187	Cosmetic Rouge
188	Cosmetic Highlight
189	Cosmetic Silver Moss
190	Cosmetic Emerald
191	Cosmetic Aqua Blue
192	Flesh Pink
193	Rosy Amber
194	Surprise Pink
195	Zenith Blue
196	True Blue
197	Alice Blue
198	Palace Blue
322	Soft Green
323	Jade
325	Mallard Green
327	Forest Green
328	Follies Pink
332	Special Rose Pink
341	Plum
343	Special Medium Lavender
344	Violet
345	Fuchsia Pink

COLOUR EFFECTS FILTERS cont.....

No.	Colour	No.	Colour
352	Glacier Blue	744	Dirty White
353	Lighter Blue	746	Brown
354	Special Steel Blue	747	Easy White
363	Special Medium Blue	748	Seedy Pink
366	Cornflower	749	Hanover Rose
5017	Light Flame	750	Boston Frost
5018	Flame	763	Wheat
5041	Salmon	764	Sun Colour Straw
5042	Deep Salmon	765	Stamford Yellow
5047	Light Rose Purple	767	Oaklahoma Yellow
5059	Indigo	770	Burnt Yellow
5077	Green Blue	774	Soft Amber Key 1
5201	New Schubert Pink	775	Soft Amber Key 2
5202	Max Blue	776	Nectarine
5205	Turquoise	777	Rust
5207	Lyric Blue	778	Millennium Gold
5209	Dewberry	779	Bastard Pink
5318	Mayan Sun	781	Terry Red
5321	Soft Golden Amber	789	Blod Red
5376	Bermuda Blue	790	Moroccan Pink
5378	Twilight Blue	791	Moroccan Frost
5423	Barely Blue	793	Vanity Fair
5426	Blueberry	794	Pretty 'n Pink
5429	Lapis Blue	795	Magical Magenta
5431	White Cap	797	Deep Purple
5433	Surf Blue	798	Chrysalis Pink
5436	Capri Blue		
5439	Riviera Blue		
5489	Sunset Pink		
5499	Hyacinth		

700 series

No.	Colour
701	Provence
702	Special Pale Lavender
704	Lily
705	Lily Frost
707	Ultimate Violet
708	Cool Lavender
709	Electric Lilac
711	Cold Blue
712	Bedford Blue
713	J.Winter Blue
714	Elysian Blue
715	Cabana Blue
716	Mikkel Blue
717	Shanklin Frost
718	Half Shanklin Frost
719	Colour Wash Blue
720	Durham Daylight Frost
721	Berry Blue
722	Bray Blue
723	Virgin Blue
724	Ocean Blue
725	Old Steel Blue
728	Steel Green
729	Scuba Blue
730	Liberty Green
735	Velvet Green
736	Twickenham Green
738	JAS Green

DIFFUSION MATERIALS

No.	Colour
214	Full Tough Spun
215	Half Tough Spun
229	Quarter Spun
216	White Diffusion
416	Three Quarter White
250	Half White Diffusion
450	Three Eighths White
251	Quarter White Diffusion
252	Eighth White Diffusion
452	One Sixteenth White
253	Hanover Frost
255	Hollywood Frost New
256	Half Hanover Frost
257	Quarter Hanover Frost
480	Atlantic Frost
481	Half Atlantic Frost
482	Quarter Atlantic Frost
217	Blue Diffusion
224	Daylight Blue Frost
225	Neutral Density Frost
228	Brushed Silk
231	Light Brushed Silk New
129	Heavy Frost
220	White Frost
221	Blue Frost
400	Rolux New
401	Light Rolux New
410	Opal Frost New
420	Light Opal Frost New
402	Soft Frost New

COLOUR CORRECTION FILTERS

No.	Colour
404	Half Soft Frost New
414	Full Hilitite New
430	Grid Cloth New
432	Light Grid Cloth New
434	Quarter Grid Cloth New
201	Full CT Blue
281	3/4 CT Blue
202	1/2 CT Blue
203	1/4 CT Blue
218	1/8 CT Blue
200	Double Blue
204	Full CT Orange
285	3/4 CT Orange
205	1/2 CT Orange
206	1/4 CT Orange
223	1/8 CT Orange
207	CT Orange +.3 Neutral Density
208	CT Orange +.6 Neutral Density
298	.15 Neutral Density(1/2 stop)
209	.3 Neutral Density (1 stop)
210	.6 Neutral Density (2 stops)
211	.9 Neutral Density (3 stops)
299	1.2 Neutral Density (4 stops)
212	L.C.T. Yellow
213	WF Green
236	HMI to Tungsten
219	Fluorescent Green
241	Fluorescent 5700°K
242	Fluorescent 4300°K
243	Fluorescent 3600°K
244	Plus Green
245	Half Plus Green
246	Quarter Plus Green
278	Eighth Plus Green
247	Minus Green
248	Half Minus Green
249	Quarter Minus Green
279	Eighth Minus Green
226	U.V. Filter
130	Clear
441	Full CT Straw
442	Half CT Straw
443	Quarter CT Straw
444	Eighth CT Straw

REFLECTION MATERIALS

No.	Colour
270	Scrim
271	Mirror Silver
272	Soft Gold Reflector
273	Soft Silver Reflector

The Rosco Cinegel range includes over 147 tools for controlling light. Since its introduction in 1970, Cinegel has continually developed and grown to meet the working needs of the professional. In 1974, Cinegel won an Academy Award for technical achievement.



Daylight Conversion Filters

AMBER–RoscoSun Daylight Conversion Filters are a range of amber filters that lower colour temperature as needed. Although typically used on daylight 5500°K sources to balance with tungsten, the range offers a multitude of technical and aesthetic colour correction possibilities. The material is deep-dyed for heat stability and superior colour transmission. All materials are 1.22 m x 7.6 m.

No. 3407	RoscoSun CTO	Converts 5500°K daylight to a nominal 2900°K
No. 3411	RoscoSun 3/4 CTO	Converts 5500°K daylight to a nominal 3200°K
No. 3408	RoscoSun 1/2 CTO	Converts 5500°K daylight to a nominal 3800°K
No. 3409	RoscoSun 1/4 CTO	Converts 5500°K daylight to a nominal 4500°K
No. 3410	RoscoSun 1/8 CTO	Converts 5500°K daylight to a nominal 4900°K
No. 3420	RoscoSun Double CTO	Converts 10,000°K daylight to a nominal 2400°K

STRAW–RoscoStraw Daylight Conversion Filters are a series of yellowish amber filters that lower colour temperature as needed. The series is offered as a yellower version of the traditional CTO series and is calibrated to the same colour correction and transmission properties. The material is deep-dyed for heat stability and superior colour transmission. All materials are 1.22 m x 7.6 m.

No. 3441	Full Straw (CTS)	Converts 5500°K daylight to a nominal 2900°K
No. 3442	Half Straw (1/2 CTS)	Converts 5500°K daylight to a nominal 3800°K
No. 3443	Quarter Straw (1/4 CTS)	Converts 5500°K daylight to a nominal 4500°K
No. 3444	Eighth Straw (1/8 CTS)	Converts 5500°K daylight to a nominal 4900°K

Tungsten Conversion Filters

Tungsten Conversion Filters are a range of blue filters that raise colour temperature as needed. Although typically used on tungsten-halogen sources to balance with daylight, the range offers a multitude of technical and aesthetic colour correction possibilities. The material is deep-dyed for heat stability and superior colour transmission. Rolls are 1.22 m x 7.6 m.

No. 3202	Full Blue (CTB)	Boosts 3200°K to nominal 5500°K daylight
No. 3203	Three-Quarter Blue (3/4 CTB)	Boosts 3200°K to nominal 4700°K daylight
No. 3204	Half Blue (1/2 CTB)	Boosts 3200°K to nominal 4100°K daylight
No. 3206	Third Blue (1/3 CTB)	Boosts 3200°K to nominal 3800°K daylight
No. 3208	Quarter Blue (1/4 CTB)	Boosts 3200°K to nominal 3500°K daylight
No. 3216	Eighth Blue (1/8 CTB)	Boosts 3200°K to nominal 3300°K daylight
No. 3220	Double Blue (2X CTB)	Boosts 2800°K to nominal 10,000°K daylight

Sun 85 and Neutral Density Filters

These filters are usually applied to windows for colour correction and/or light intensity reduction. RoscoSun 85 is an amber filter that lowers the colour temperature of daylight to balance with 3200°K sources. Rosco Neutral Density Filters reduce the level of exterior light and bring it within the exposure range of interior light levels. Two additional RoscoSun materials combine Sun 85 conversion with Neutral Density reduction. All materials are deep-dyed for optical clarity. Except as noted, all materials are extra wide 1.52m x 6.09m. Available as sleeves (see page 17).

No. 3401	RoscoSun 85 Converts 5500°K daylight to a nominal 3200°K.
No. 3415	Rosco N.15 Reduces light intensity one half stop.
No. 3402	Rosco N.3 Reduces light intensity one stop.
No. 3403	Rosco N.6 Reduces light intensity two stops.
No. 3404	Rosco N.9 Reduces light intensity three stops.
No. 3405	RoscoSun 85N.3 Reduces light intensity one stop and converts daylight to a nominal 3200°K.
No. 3406	RoscoSun 85N.6 Reduces light intensity two stops and converts daylight to a nominal 3200°K.
No. 3421	BlackScrim Perforated material, black on both sides. Reduces light intensity two stops with no effect on Kelvin. Rolls 1.22m x 7.6m
No. 3423	Cinescreen A woven material, black on both sides. Reduces light intensity two stops.
No. 3809	RoscoScrim Similar to BlackScrim above - but silver on one side, with black side functioning as two stop neutral density scrim. Rolls 1.22m x 7.6m

Fluorescent Light Filters

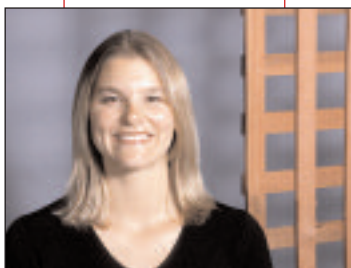
These green and magenta filters are used for adding or removing green, usually when colour correcting fluorescent or industrial discharge lamps. no.3304, no.3308 and no.3310 are particularly useful for U.S. Cool White Fluorescents.

All rolls are 1.22m x 7.6m. Available as sleeves (see page 17).

No. 3304	Tough Plusgreen Converts daylight to match Cool White fluorescents. Equivalent to CC30 Green.
No. 3309	Tough 3/4 Minus Green New Appropriate fluorescent correction for digital photography and video applications
No. 3315	Tough 1/2 Plusgreen Adds partial green to daylight and 3200°K sources for balancing with fluorescents and discharge lamps. Equivalent to CC15 Green.
No. 3316	Tough 1/4 Plusgreen Adds partial green to daylight and 3200°K sources for balancing with fluorescents and discharge lamps. Equivalent to CC075 Green.
No. 3317	Tough 1/8 Plusgreen Adds partial green to daylight and 3200°K sources for balancing with fluorescents and discharge lamps. Equivalent to CC035 Green.
No. 3308	Tough Minusgreen Converts cool white fluorescents to nominal daylight by absorbing excess green output. Equivalent to CC30 Magenta.
No. 3313	Tough 1/2 Minusgreen Absorbs excess green from fluorescent and discharge lamps. Equivalent to CC15 Magenta.
No. 3314	Tough 1/4 Minusgreen Absorbs excess green from fluorescent and discharge lamps. Equivalent to CC075 Magenta.
No. 3318	Tough 1/8 Minusgreen Absorbs excess green from fluorescent and discharge lamps. Equivalent to CC035 Magenta.



NO DIFFUSION



HILITE



1/2 TOUGH WHITE

OPAL
TOUGH FROST

Shown above are subtle but significant results you can achieve with Rosco diffusion materials. The model, set and film are the same in each photo, only the Rosco diffusion materials were changed. Note: diffusion results will vary when the diffusion material is affixed at the source vs in a frame placed at a distance in front of the source

Photo credit: Joanne A, Calitri,
International, Faculty Brooks Institute of
Photography, Santa Barbara CA

Diffusion Materials

With over 20 different materials, Rosco offers the broadest range of diffusion available. A wide variety of effects is possible, ranging from the slightest "feathering" of a beam edge, to the creation of a broad shadowless expanse. Diffusion materials are included in Rosco's Cinegel range. You'll find samples of each of these materials in Rosco's Cinegel swatchbook. Except as noted, all materials are 1.22m x 7.6m.

No. 3002	Soft Frost
No. 3004	Half Density Soft Frost
No. 3014	Hilite (1.37m x 6.7m)
No. 3030	Grid Cloth
No. 3032	Light Grid Cloth
No. 3034	1/4 Grid Cloth
No. 3000	Tough Rolux
No. 3001	Light Tough Rolux
No. 3006	Tough Spun
No. 3007	Light Tough Spun
No. 3022	1/4 Tough Spun
No. 3008	Tough Frost
No. 3009	Light Tough Frost
No. 3010	Opal Tough Frost
No. 3020	Light Opal Tough Frost
No. 3011	Tough Silk
No. 3015	Light Tough Silk
No. 3026	Tough White Diffusion
No. 3027	1/2 Tough White Diffusion
No. 3028	1/4 Tough White Diffusion
No. 3029	Silent Frost
No. 3040	Powder Frost
No. 3046	Velvet Frost
No. 3047	Light Velvet Frost
No. 3060	Silent Grid Cloth™ (1.52m x 6.10m)
No. 3062	Silent Light Grid Cloth™ (1.52m x 6.10m)
No. 3064	Silent Quarter Light Grid Cloth™ (1.52m x 6.10m)

New Dyed Grid Cloth

A completely new approach to large area lighting, Dyed Grid Cloths combine Rosco's unique Silent Light Grid Cloth with our award winning Cinegel correction colours. Available in rolls 1.52m x 6.10m or ready-to-use butterflies, Dyed Grid Cloth is perfect for overheads where diffusion and colour correction go together. Rolls 1.52m x 6.10m

No. 3082	1/2 Straw Grid Cloth Use this amber correction and soft diffusion combination to create a warm, sultry glow from any source.
No. 3072	1/2 Blue Grid Cloth An ideal overhead diffusion for correcting large tungsten sources like space lights.
No. 3090	Moonlight Grid Cloth Moonlight Gridcloth creates a soft pale blue cast of light and is the perfect tool for recreating one of nature's most challenging light sources.

Cinelux™

Cinelux is a selection of colour effects filters from the Roscolux range which are produced in rolls 1.22m x 7.62m. They are ideally suited for film and television production where larger lighting fixtures are used, and where colour is often mounted on large frames. Cinelux filters are now included in Rosco's Cinegel range and you'll find samples of all these products in the Cinegel swatchbook.

02	Bastard Amber	51	Surprise Pink
302	Pale Bastard Amber	59	Indigo
06	No Color Straw	60	No Color Blue
08	Pale Gold	360	Clearwater
310	Daffodil	62	Booster Blue
12	Straw	362	Tipton Blue
16	Light Amber	364	Bell Blue
316	Gallo Gold	65	Daylight Blue
17	Light Flame	365	Tharon Delft Blue
18	Flame	376	Bermuda Blue
318	Mayan Sun	77	Green Blue
21	Golden Amber	378	Alice Blue
321	Soft Golden Amber	80	Primary Blue
23	Orange	83	Medium Blue
26	Light Red	87	Pale Yellow Green
33	No Color Pink	88	Light Green
333	Soft Blush Pink	89	Moss Green
34	Flesh Pink	91	Primary Green
37	Pale Rose Pink	92	Turquoise
39	Skelton Exotic Sangria	93	Blue Green
41	Salmon	97	Light Grey
42	Deep Salmon	397	Pale Grey
44	Middle Rose	98	Medium Grey
47	Lt. Rose Purple	99	Chocolate

The Storaro Selection™

Ten colour effects lighting filters designed to the personal specifications of eminent cinematographer Vittorio Storaro. These ten colours represent key chromatic elements of the visible spectrum, and are intended for dramatic effect and strong emotional response. Rolls are 1.22m x 7.62m.

2001	Storaro Red	2006	Storaro Azure
2002	Storaro Orange	2007	Storaro Blue
2003	Storaro Yellow	2008	Storaro Indigo
2004	Storaro Green	2009	Storaro Violet
2005	Storaro Cyan	2010	Storaro Magenta

CalColor™

Academy Award Winner 1999

Calibrated Colour by Rosco is a series of colour effects lighting filters designed specifically to the spectral sensitivity of colour film. The series includes the primary colors Blue, Green and Red, along with the secondary colours Yellow, Magenta and Cyan and the intermediary colours Pink and Lavender. Each colour is designed in four densities: 15, 30, 60 and 90, corresponding to the familiar 1/2, 1, 2 and 3 stop calibrations.

50cm x 61cm Sheets
7.62m x 1.22m Rolls

A 25cm x 30cm sample kit is available. See page 20.

No. 4215	15 Blue (1/2 stop)
No. 4230	30 Blue (1 stop)
No. 4260	60 Blue (2 stop)
No. 4290	90 Blue (3 stop)
No. 4307	07 Cyan (1/4 stop)
No. 4315	15 Cyan (1/2 stop)
No. 4330	30 Cyan (1 stop)
No. 4360	60 Cyan (2 stop)
No. 4390	90 Cyan (3 stop)
No. 4415	15 Green (1/2 stop)
No. 4430	30 Green (1 stop)
No. 4460	60 Green (2 stop)
No. 4490	90 Green (3 stop)
No. 4515	15 Yellow (1/2 stop)
No. 4530	30 Yellow (1 stop)
No. 4560	60 Yellow (2 stop)
No. 4590	90 Yellow (3 stop)
No. 4615	15 Red (1/2 stop)
No. 4630	30 Red (1 stop)
No. 4660	60 Red (2 stop)
No. 4690	90 Red (3 stop)
No. 4715	15 Magenta (1/2 stop)
No. 4730	30 Magenta (1 stop)
No. 4760	60 Magenta (2 stop)
No. 4790	90 Magenta (3 stop)
No. 4815	15 Pink (1/2 stop)
No. 4830	30 Pink (1 stop)
No. 4860	60 Pink (2 stop)
No. 4890	90 Pink (3 stop)
No. 4915	15 Lavender (1/2 stop)
No. 4930	30 Lavender (1 stop)
No. 4960	60 Lavender (2 stop)
No. 4990	90 Lavender (3 stop)

The CalColor System is protected under
U.S. Patent # 6,259,572 issued July 2001.

Filters for Controlling Carbon Arc and HMI Lighting

A traditional range of filters is also available for Carbon Arc and HMI correction. These filters are all designed to reduce colour temperature in discrete steps. Rolls are 1.22m x 7.6m.

No. 3107	Tough Y1	Pale straw filter for use on HMI and White Flame Arcs.
No. 3106	Tough MTY	For correcting White Flame Arcs to 3200°K Tungsten.
No. 3102	Tough MT2	Useful as an amber conversion filter for HMI and Arcs.
No. 3114	Tough UV Filter	A slightly warm filter that absorbs 90% of UVA output.
No. 3134	Tough MT54	A pale straw warming filter for Arcs and HMI.
No. 3150	Industrial Vapor New	A correction filter that converts Tungsten to Sodium Vapour (Street Lights)
No. 3152	Urban Vapor New	Creates the visual reddish-orange appearance of Sodium Vapour street lights, without the green content found in actual Sodium Vapour sources.

Acrylic Panels

Daylight Control is also available in 1.22m x 2.44m acrylic sheets for daylight correction or light intensity reduction. They offer quick set-up, easy handling and multiple re-use. Ships in packs of five. Also available in 1.52m x 2.44m

No. 3761	Roscolex 85	Optically clear acrylic panel. Converts 5500°K to a nominal 3200°K.
No. 3751	Roscolex 1/2 CTO	Optically clear acrylic panel. Converts 5500°K to a nominal 3800°K.
No. 3762	Roscolex N.3	Optically clear acrylic panel. Reduces light intensity one stop.
No. 3763	Roscolex N.6	Optically clear acrylic panel. Reduces light intensity two stops.
No. 3764	Roscolex N.9	Optically clear acrylic panel. Reduces light intensity three stops.

Polarizing Filters

This neutral grey linear polarizing film is used in front of lights to reduce the glare caused by smooth surfaces such as glass, water, paper and certain metallic objects. Especially effective when used in conjunction with a polarizing filter at the lens (cross polarization). Should be placed at a slight distance from hot lights. (See RoscoView - page 18)

No. 730011	Sheet:	43cm x 51cm
No. 730012	Roll:	43cm x 30.5m
No. 730013	Roll:	43cm x 15.24m

Roscopaks™

Roscopak materials are light in weight, yet strong and durable. These materials can be taped or tacked to virtually any wall, ceiling or panel to turn that area into an efficient reflector. Each Roscopak measures 1.2m x 1.4m, and is packaged in a handy pocket size pouch.

No. 35850910	Roscopak S/G (silver/gold)
--------------	-------------------------------



Trucolor IR Camerafilter **New**

3mm thick optical glass camera filter restores proper colour saturation in situations where the use of heavy neutral density filter washes out colour.

The Rosco TruColor IR Camera Filter balances the visible and infrared light allowing the camera sensors to render proper colour saturation and restores the colour fidelity in the finished composition

No. 1204 8010 0404	4" x 4"	(10.16cm x 10.16cm)
No. 1204 8010 4565	4" x 5.65"	(10.16cm x 14.35cm)
No. 1204 8010 5656	5.65" x 5.65"	(14.35cm x 14.35cm)
No. 1204 8010 6666	6" x 6"	(16.76cm x 16.76cm)



Without Truecolor IR Camera Filter



With Truecolor IR Camera Filter

The Professional's Guide to Colour and Correction Filters

"Filter Facts", Rosco's 32-page manual, is the best compendium you'll find on using and selecting light control filters. It reviews all the photographic light sources and their properties, including natural daylight, artificial daylight (such as HMI), tungsten-halogen and incandescent lamps. It also reviews the industrial discharge sources, such as fluorescent, Mercury, Sodium, etc) and the filters you need to correctly work with these various sources. Individual copies of "Filter Facts" are free from Rosco or any Rosco film or TV lighting dealer, or can be downloaded from Rosco's website.



Butterflies and Overheads

A number of Cinegel materials are available to fit the standard butterfly and overhead frames used in motion picture and television production. These can be produced from our standard range of products such as Soft Frost or Scrim, or as a custom order, with products from the filter range such as CTO's or CTB's to whatever size and finishing you require. Choose the colour correction filter you need from the Cinegel range; Daylight Conversion which lowers colour temperature as required or Tungsten Conversion filter which raises colour temperature as required. All materials are supplied edge-finished with binding and grommets. Filter grip panels are sewn on to a fabric edge tape, which gives strength and flexibility, up to any size. 3014 and 3029 have an ultrasonic welded seam every 1.22m, 3030, 3032, and 3034 have a sewn hem.

Available in sizes to fit standard grip frames, or any custom size required.

Single Net - Black
 Double Net - Black
 Single Net - White
 Double Net - White
 Black Solid
 White Solid
 White Sheet
 China Silk - White
 China Silk - Black
 Artificial Silk - White
 Artificial Silk - Black

Artificial 1/4 Silk - White
 Artificial 1/4 Silk - Black
 Grid Cloth (Full/Half/Quarter)
 Silent Grid Cloth (Full/Half/Quarter)
 Griffolyn B & W - T55
 Griffolyn B & W - T85
 Ultrabounce
 Silver Lame
 Gold Lame
 S/G Checkerboard
 Silver Dayflector

Gold Dayflector
 Muslin (Bleached)
 Muslin (Unbleached)
 Grey Muslin
 Hi-Lite
 Chromakey Blue
 Chromakey Green
 Digicomp Blue
 Digicomp Green
 Soft Frost



Reflection Media

Rosco's reflector materials offer a wide variety of choices for surfacing reflector boards or for use wherever reflected light is required. The product designation generally indicates the quality of the reflection. Rosco's Cinegel swatchbook should be consulted for details. Rolls are 1.22m x 7.6m.

No. 3801
 No. 3802
 No. 3803
 No. 3804
 No. 3805
 No. 3830

Roscoflex M (mirror)
 Roscoflex H (hard)
 Roscoflex S (soft)
 Roscoflex SS (supersoft)
 Roscoflex G (gold tinted)
 Spun Silver

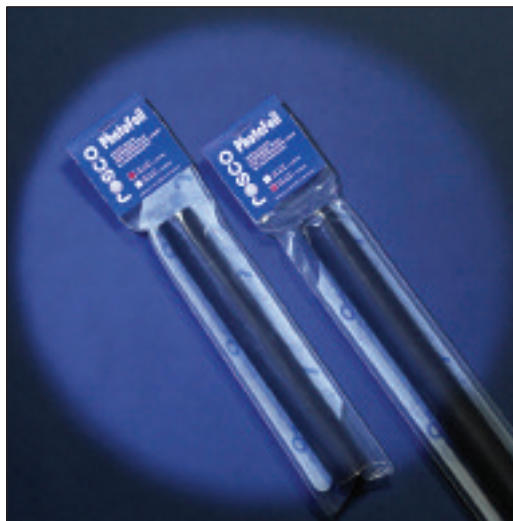
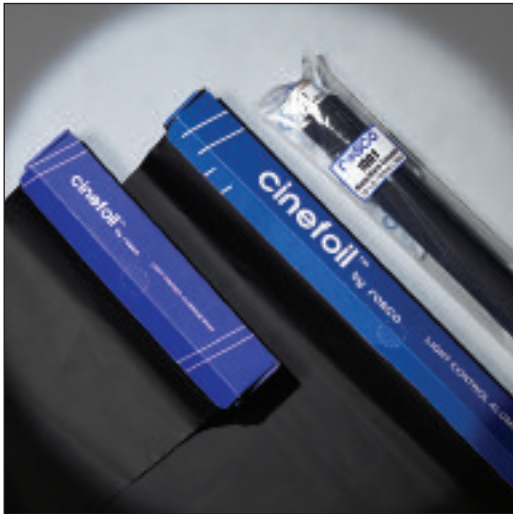
No. 3809
 No. 3812
 No. 3813
 No. 3814
 No. 3840

RoscoScrim (perforated silver/black)
 Featherflex S/G (silver/gold)
 Thin Mirror - S (1.52m x 6.10m)
 Thin Mirror - G (1.52m x 6.10m)
 Cinebounce - White/Black

Cinefoil™

Cinefoil is a matte black aluminum material that virtually soaks up light. Ideal for masking light leaks and/or eliminating unwanted reflections. It can be quickly molded to form barndoors, flags and other configurations.

No. 360112	Cinefoil	61cm x 7.62m (Carton)
No. 360113	Cinefoil	30cm x 15.5m (Carton)
No. 360114	Cinefoil	1.22m x 7.62m (Carton)
No. 101P10012425	Cinefoil	61cm x 7.62m (Packet)
No. 101P10011250	Cinefoil	30cm x 15.5m (Packet)



Matte Black Photofoil™

Cinefoil™ is now available in convenient shorter lengths for still photographers, videographers and students. Packaged in a protective polytube, Photofoil offers the same light control properties at an economical price.

No. 101 01001 1210	Matte Black Photofoil, 30cm x 3.48m
No. 101 01001 2410	Matte Black Photofoil, 60cm x 3.48m

PROTECTIVE FILTERS

Thermashield™

This specialized filter incorporates an advanced coating which reflects infrared energy. When used in conjunction with Roscolux or Cinegel colour filters, Thermashield prevents the colour filters from absorbing IR energy as heat, thus allowing the filters to last much longer. Thermashield is extremely effective in protecting colour filters from light sources that are IR rich, its 7 mil polyester base limits its use to fixtures of 1000 watts or less (1250 watts at 240V). It is not suited for extremely hot light sources such as Xenon or HMI. Users should be careful to follow the package instructions and install Thermashield with the reflective coating towards the lamp.

No. 199510	30 cm x 30cm
No. 199511	50 cm x 61cm
No. 199512	1.22m x 1.22m

Super Heat Shield™

Super Heat Shield is an extremely heat resistant plastic that acts as a barrier, blocking the heat of a fixture. For maximum efficiency, a minimum 2.5cm air space must be maintained between Super Heat Shield and the colour filter.

No. 1991	50cm x 61cm sheet
No. 19912	61cm x 15.24m roll
No. 19913	1.22m x 7.62m roll
No. 19911	61cm x 7.62m

UV Filter™

Rosco UV Filter effectively extends the life of your colour filter, by absorbing the damaging ultraviolet energy that can prematurely fade dyes. While it is not possible to determine the length of time a filter will last without fading, using the UV Filter will extend the life of unprotected gel by three times or better. This is especially useful in T5 and T8 fluorescent lamps.

No. 31141	50cm x 61cm sheet
No. 3114	61cm x 15.24m roll
No. 311413	1.22m x 7.62m roll



Fluorescent Sleeves™

For simple and economical control of fluorescent lighting, Roscosleeves can be supplied in any Rosco filter colour—or combination of colours) Roscolux, Cinegel or E-Colour+. Not recommended for use with High Output or Very High Output lamps. Sleeves are available in: 0.61m, 1.22m and 1.52m

All are available with 1 colour, 1 colour + UV and Clear sleeve

T 5
T 8
T12

Custom lengths are available. Call for pricing. Additional end caps available.

ChromaSleeves

ChromaSleeves are body-coloured, extruded polycarbonate sleeves with an added UV absorber to prevent premature colour fading. Available in nine standard stocked colours or custom colours matched to any Rosco filter. Each sleeve comes with two end caps which fit snugly over the ends and will hold the lamps in place even if broken, preventing shattered glass from falling. ChromaSleeves for T5 or T8 lamps are 1.22m long, in any standard colour and includes UV absorber and end caps.

No. 110 08410 Dark Blue	No. 110 08415 Yellow
No. 110 08411 Green	No. 110 08417 Amber
No. 110 08412 Red	
No. 110 08413 Purple	
No. 110 08414 Pink	

For custom colours: minimum order of 2,400 linear feet per colour, per diameter. Allow 2–4 weeks of delivery.



Quick Color Sleeves can be made to slide over any size or shape of fluorescent tube, and can be easily cut with scissors or a knife

Quick Color Sleeves ^{New}

Introducing Quick Color Sleeves—put any colour on virtually any fluorescent light source, fast and affordable.

Putting colour on your fluorescent light sources is easier – and gentler on your budgets – using Rosco's newest colour sleeve product, Quick Color Sleeves. This gel-only product is a flat welded tube of Rosco colour filter, made in any colour from any line of Rosco gel. Folded flat for easy shipping and storage, the sleeve puffs open like an envelope to slide over any size or shape of fluorescent tube, from small T3 and T5 lamps to larger T12 and biaxial shapes. Quick Color Sleeves come in 1.22m lengths but are easily cut with scissors or a knife.

Add accent colours to restaurants, theatres, or other hospitality centers. Change colours to suit different occasions and holidays—no technical expertise required. Just slip off the old Quick Color Sleeve and replace it with a new colour. Adjust colour balance in television studios or reduce glare on location shoots in just a few minutes using neutral density or any other correction filter.

Custom sizes can be made to order and Quick Color Sleeves can be made from any plastic colour filter, though minimum quantities may apply. For bulk applications, continuous rolls of Quick Color Sleeves are also available. Contact Rosco for details.

110 08430 4805 T5 x 1.22m

110 08430 4808 T8 x 1.22m

110 08430 4812 T12 x 1.22m

Please specify Rosco gel colour when ordering.



RoscoView won the Cinec Award for Lighting Engineering Category

RoscoVIEW System

The RoscoVIEW is comprised of two separate components:

- 1) RoscoVIEW Film for the window.
- 2) RoscoVIEW Filter for the camera.

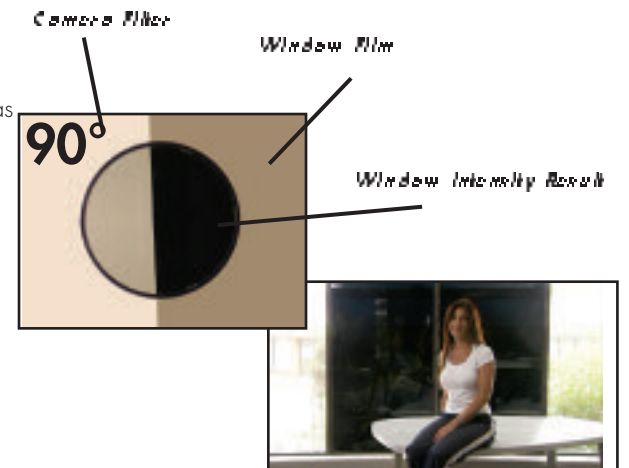
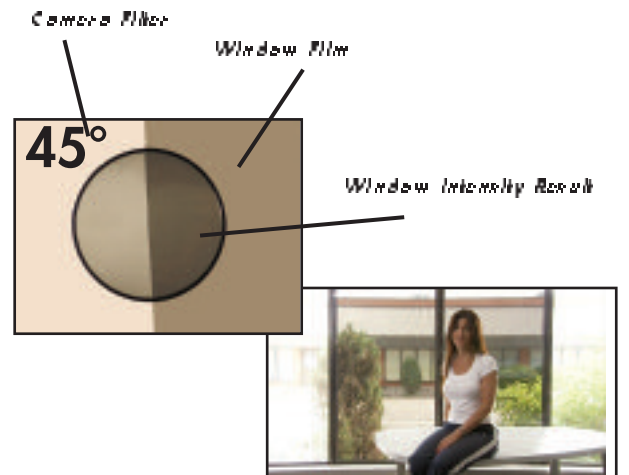
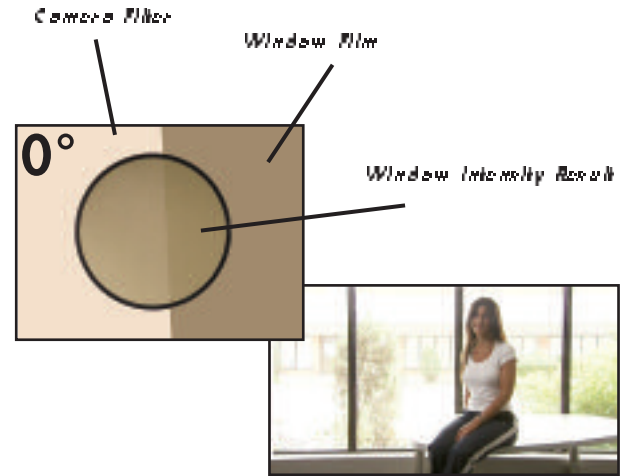
When utilized together, you are able to instantly control 100% of exterior brightness as seen through windows without effecting the lighting and exposure within the studio.

Features:

- Optically Clear, wide width, high transmission film.
- Neutral grey.
- UV Resistant.
- Neutral Density equivalent: less than 1 stop at 0° linear.
- Near total blackout at 90° cross polarization.
- 1.42m x 2.74m rolls.
- Also available 1.42m wide x linear metre for custom sizes.

Benefits:

- You can instantly compensate for changes in the daylight exposure as seen through the windows.
- Reduce studio down-time, no more change out of filter, increase shooting time.
- Great for areas where it is difficult to re-apply filter regularly.
- More economical for larger window surfaces.
- Any size window can be accommodated by seaming two or more panels together.
- RoscoVIEW Film can be mounted in frames or can be incorporated on the RoscoShade™ system.



To view our demo video, please visit

www.rosco.com/uk/promotions/roscoview.asp

RoscoShades

RoscoShades, designed for permanent installation in television studios and other broadcast facilities, offer complete control over exterior light intensity and colour temperature. The shade system can be equipped with any of Rosco's Academy Award® winning light control filters.

RoscoShades are particularly useful in studios where the view from the window is part of the television picture. They are also useful in situations where the windows require blacking out from time to time, such as in churches that broadcast worship services.

RoscoShades are custom designed to fit your specific windows and filter needs. They are US made and available in either manual pull or motorized drive systems. The latter is often chosen where the windows are particularly large, or in hard to reach locations. Up to five different filters can be deployed in the RoscoShades system.



The electronic motor control allows the correct filter to be deployed on the window in just a few seconds.

To view our demo video, please visit

www.rosco.com/uk/video/roscoshades.asp

Colour Effects Kit

This kit contains: twelve (30.48cm x 30.48cm) filters, one of each colour.

Cool/Warm

103	Straw
110	Middle Rose
205	Half CT Orange
192	Flesh Pink
134	Golden Amber
162	Bastard Amber
122	Fern Green
115	Peacock Blue
245	Half Plus Green
202	Half CT Blue
117	Steel Blue
136	Pale Lavender

Saturated Colours

101	Yellow
106	Primary Red
139	Primary Green
119	Dark Blue
158	Deep Orange
128	Bright Pink
104	Deep Amber
111	Dark Pink
116	Medium Blue Green
197	Alice Blue
147	Apricot
148	Bright Rose

No. 11009060SKIT - Cool/Warm

No. 11009070SKIT - Saturated Colours



Colour Correction Kit

This kit contains: twelve (30.48cm x 30.48cm) filters, one of each colour

201	Full CT Blue
202	Half CT Blue
203	Quarter CT Blue
218	Eighth CT Blue
217	Blue Diffusion
221	Blue Frost
204	Full CT Orange
205	Half CT Orange
206	Quarter CT Orange
223	Eighth CT Orange
207	Full CTO +.3NDTO
208	Full CTO +.6ND

No. 11009030SKIT - Correction Kit

Cinegel Sampler Kit

This kit contains: twelve (30.48cm x 30.48cm) filters, one of each colour.

3008	Tough Frost
3026	Tough White Diffusion
3029	Silent Frost
101	Yellow
106	Primary Red
139	Primary Green
201	Full CT Blue
204	Full CT Orange
207	Full CTO +.3ND
136	Pale Lavender
162	Bastard Amber
117	Steel Blue

No. 11009010SKIT - Variety

CalColor Kit

The CalColor Kit consists of 25cm x 30cm sheets of the 32 colours in the CalColor range.

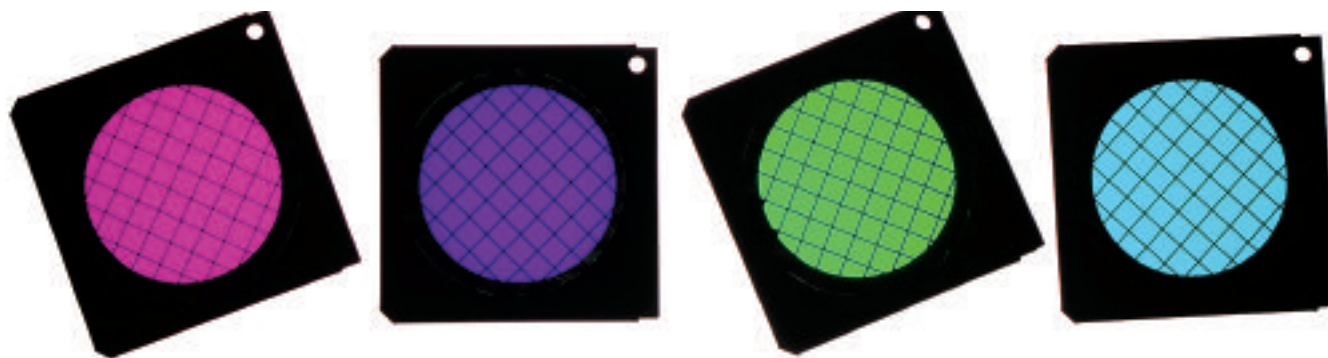
No. 224010 - CalColor Kit

Diffusion Kit

This kit contains: twelve (30.48cm x 30.48cm) filters, one of each colour

3000	Tough Rolux
3001	Light Rolux
3002	Soft Frost
3006	Tough Spun
3008	Tough Frost
3010	Opal Tough Frost
3015	Light Tough Silk
3022	1/4 Tough Spun
3026	Tough White Diffusion
3027	Tough 1/2 White Diffusion
3028	Tough 1/4 White Diffusion
3029	Silent Frost

No. 11009020SKIT - Diffusion



Permacolor Dichroic Glass Filters

Rosco Permacolor dichroic glass filters are the perfect choice for designers requiring long-lasting, high-quality filters. Permacolor withstands the heat of high temperature lighting fixtures like MR16, metal halide discharge, and high wattage tungsten lamps and are ideal for use in permanent installations. Rosco's range of standard colours includes the bright saturated colours prone to premature fading in gel as well as a selection of pale tints and accent colours selected by leading architectural designers around the world. Permacolor is manufactured in Rosco's purpose built facility to the highest standards for colour tolerance, durability, and repeatability, run to run and year after year. Permacolor is available in virtually any size or shape.

STANDARD COLOURS

No.	Colour	No.	Colour
36500	Primary Red	35400	Sky Blue
36100	Flame Red	35100	Light Blue Green
35900	Orange	31080	Primary Blue
35600	Medium Orange	34600	Medium Red Blue
35401	Amber	34200	Deep Purple
35200	Yellow	34965	Lavender
34959	Light Yellow Green	34640	Vivid Magenta
35156	Fern Green	34763	Deep Magenta
35055	Primary Green	34630	Hot Pink
34853	Turquoise	34758	Medium Pink
35700	Sea Blue	31033	Light Pink
35590	Cyan		

ARCHITECTURAL SERIES COLOURS

No.	Colour
31337	Pale Pink
31018	Amber Blush
31002	Bastard Amber
31013	Goldenrod
31012	Bright Straw
31086	Industrial Green
31073	Peacock Blue
31065	Mediterranean Blue
31062	Booster Blue
31055	Lilac
31054	Lavender Accent
31048	Purple Fusion

Permacolor Technical Coatings

IR/UV FILTER (HOT MIRROR)

A clear glass filter, IR/UV is designed to pass visible light while reflecting both infrared (700nm – 1200nm) and near UV energy (325nm – 400nm). Perfect for museum and architectural applications or as a heat shield for less durable plastic or glass filters.

No. 058000

UV BLOCKING FILTER

Rosco's UV Blocking Filter offers more complete filtration of ultraviolet energy, blocking wavelengths from 250nm to 400nm. With a very minimal colour cast, this filter can be used in a wide range of lighting and scientific applications.

No. 054000

WOODS GLASS UV EFFECTS FILTER

Creating fluorescent special effects requires a filter that passes ultraviolet light while blocking most of the visible light. Rosco's UV Woods Glass does exactly this, passing UV energy in the peak transmission range of 365nm while cutting off visible light above 420nm. For best results, use Woods Glass only on light sources rich in UV energy (metal halide or xenon, for example).

No. 053650

Library Colours

If you cannot find the colour you need in the standard colour range, we may have the colour you need in our Library Colours. Many non-stocking colours are available on the shelf for immediate purchase. These colours have been designed as custom colours and do not require a custom design charge. Contact Rosco for more information.

Custom Colours

If your project requires a specific colour, Rosco will match the sample colour you provide. A custom design charge and minimum quantity requirements may apply. Please contact Rosco for more information.

Permacolor Frames

- No. 0059525 158mm x 158mm Permacolor Frame with Safety Grid
- No. 0059075 190mm x 190mm Permacolor Frame with Safety Grid
- No. 0059100 254mm x 254mm Permacolor Frame with Safety Grid

133mm round fits 158mm frame
 168mm round fits 190mm frame
 209mm round fits 254mm frame



A Permacolor swatchbook, providing Roscolux matches to the standard and architectural series, is now available free at any Rosco office.



The Permacolor Architectural Series Sample Kit includes 12 colours, 6 colour correction filters, White Diffusion and IR/UV Filter.

No. 98600 0000

The Permacolor Standard Series Sample Kit contains a sample filter of each of the 24 colours.

No. 98500 0000

Cinedichro™

Cinedichro™ filters are extremely durable, heat resistant dichroic filters. Cinedichro™ has been engineered to provide true, accurate colour correction, precisely matching industry standards for colour balancing daylight and tungsten light sources. Cinedichro™ filters can be used on most motion picture lighting fixtures — even 6K pars — and have a maximum diameter of 34.2cm. Please contact Rosco for more information on using Cinedichro™ filters with specific fixtures. Price according to size. Call for details.

- | | |
|--|--|
| No. 05329210 Cinedichro™ Full Blue CTB | No. 05349810 Cinedichro™ 1/2 CTO |
| No. 05329410 Cinedichro™ 1/2 Blue CTB | No. 05349910 Cinedichro™ 1/4 CTO |
| No. 05329810 Cinedichro™ 1/4 Blue CTB | No. 05343010 Cinedichro™ White Diffusion |
| No. 05349710 Cinedichro™ Full CTO | No. 05800008 IR/UV Filter |

DichroFilm **NEW!**

Introducing DichroFilm, the latest achievement in the development of plastic colour filters, only by Rosco. DichroFilm combines the flexibility, light weight, and safe characteristics of a plastic gel with the longevity and heat resistance of a dichroic filter.

Manufactured on a .127mm thick high temperature plastic, DichroFilm will outlast any ordinary plastic filter and has been successfully used in long term applications on hot, bright light sources as high as 20,000 watts! It is perfect for permanent installations where a flexible filter is required, or where installing glass could pose a safety hazard. Dichrofilm is manufactured in 63.50cm x 63.50cm sheets and can easily be cut with scissors or a cutting table. Available in 10 standard colours with custom colours available on request.

- | | | |
|----------------------------|-----------------------------|---|
| No. 106 09108 Primary Blue | No. 106 09520 Primary Green | Available in:
63.50cm x 63.50cm
25.40cm x 25.40cm
19.05cm x 19.05cm
15.24cm x 15.24cm |
| No. 106 09320 CTB Daylight | No. 106 09550 Yellow | |
| No. 106 09340 CTO Tungsten | No. 106 09559 Cyan | |
| No. 106 09460 Indigo | No. 106 09590 Orange | |
| No. 106 09476 Magenta | No. 106 09650 Red | |



An early, and spectacular use of Dichrofilm. Syncrolite flew in twelve 8kw units for a special celebration of the pyramids in Giza, Egypt. Gel scrolls, fabricated with DichroFilm, provided the colour you see on the face and sides of the pyramids.

Credits: Lighting Designer: Durham Marengi
 Lighting Director: Eneas Mackintosh
 Photography: Nick Jones

Lens/Reflector Cleaner

The professional's choice for over 50 years. Especially designed for cleaning lenses, mirrors, reflectors, glass and dichroic filters, and other fine-quality optics. Easy-to-use and fast drying. Quickly removes dirt, residue, smudges and fingerprints. Free of ammonia, detergents and glycerine. The new handy spray bottle is particularly suited for lighting crews and rental shops, when cleaning lenses and reflectors in moving lights, as well as standard lighting fixtures.

No. 72021	59.15ml bottle
No. 7202	59.15ml bottle x 10
No. 8550 7202 0008	0.24ltr spray bottle
No. 855B 7202 0008	0.24ltr spray bottle x 12
No. 8550 7202 0016	0.47ltr bottle
No. 855B 7202 0016	0.47ltr bottle x 6

Lens Tissue

Premium, lightweight, disposable, micro-fiber tissue for cleaning lenses, filters and optics. Lintless and static-free. Contains no abrasives or silicone. Best when used together with Rosco Lens Cleaner. Handy pocket-size 10.16cm x 15.24cm booklet, containing 100 sheets.

No. 74461	1 x booklet (100 sheets)
No. 7446	10 x booklets (1000 sheets)
No. 855B72020204	Pack of 25 Lens Tissue Towlette



MR-16 Filter Holder

A simple solution for adding colour filters or patterned glass to your MR-16 lamps. Place a 1.95" diameter (49.5 mm) glass filter into the holder ring, set the MR-16 in next, then clip the retaining ring around the reflector.

No. 120 97195 0000	MR-16 Filter Holder
--------------------	---------------------



Storage Drawers

Heavy gauge two-inch deep corrugated drawer and sleeve that accepts 20" x 24" sheets of Rosco colour filters. Shipped completely assembled. Packed six to a case.

No. 08610	Storage Drawers (set of 6)
-----------	----------------------------

Backdrops and Digital Imaging

Rosco's Digital Imaging division supplies custom imaging products for motion pictures, television, theatre, architectural and display venues. Rosco Day/Night Backdrops were honoured with an Emmy® from the Academy of Television Arts and Sciences and a Technical Achievement Award® from the Academy of Motion Picture Arts and Sciences.

The company offers a large selection of rental backdrops, an extensive image library, as well as two decades of experience in photography and production for custom backdrops.

For a FREE CD showing the full range of rental backdrops contact Rosco or your local dealer. Alternatively you can log onto our website at: www.roscodigital.com.



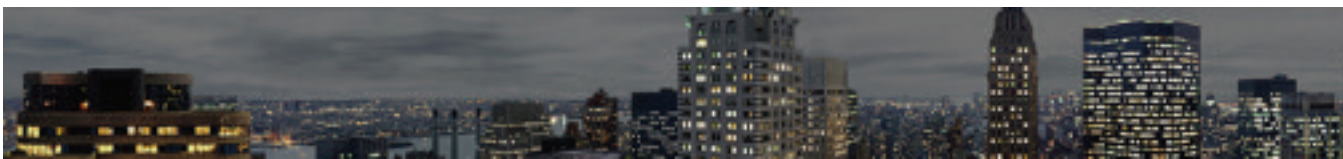
Rosco provided a new and dramatic use of a backdrop for the "Callas Master Class" by Terence McNally which was performed in Paris at the Theatre de Paris. There was no scenery, just the use of an empty stage, a table, a chair, a piano and a Rosco backdrop.



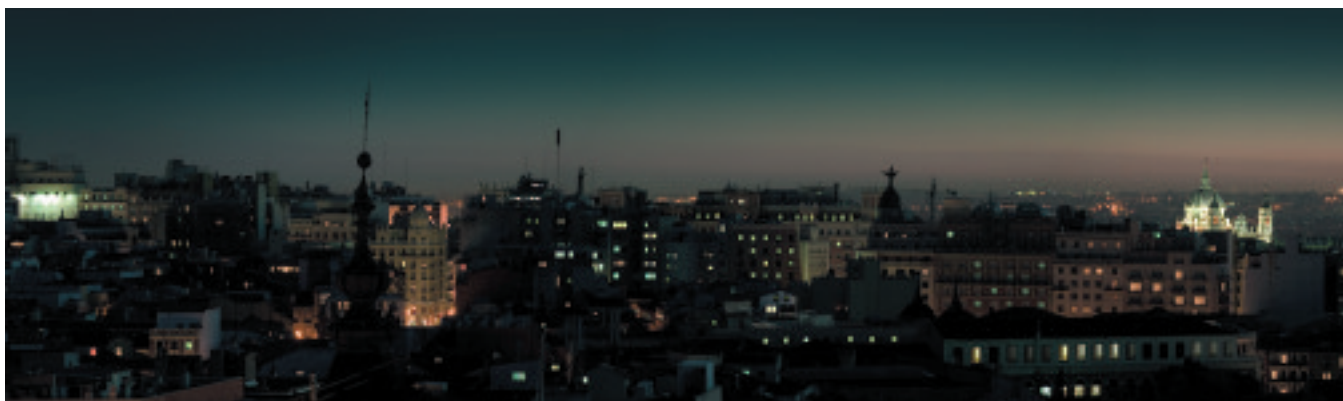
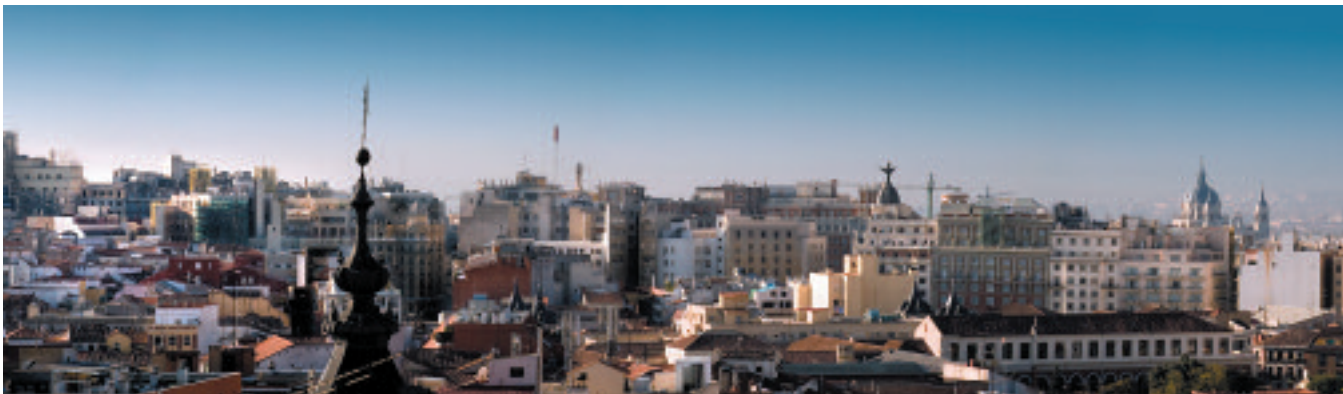
You can view, sort and print our rental backdrops online at www.roscodigital.com



Rosco Day/Night Backdrop created by Rosco for "The Bourne Ultimatum", Production Designer: Peter Wenham, Supervising Art Director: Alan Gilmore, Director of Photography: Oliver Wood, Photography by Phil Greenstreet of Rosco



Day/Night Backdrop used for the 2003 film "Johnny English"



The above backdrop was commissioned by Louis Valles (Koldo) for Bocaboca Producciones for a Spanish series called "Con do Tacones"

Rental backdrop shown below, R-0099 in Rosco rental catalogue.



Top shows day image when lit from front
Bottom shows night image when lit from back.



Standard Stainless Steel

Rosco and DHA Gobo Ranges have merged! These two premiere ranges of steel and glass gobo designs, created by acclaimed lighting and scenic designers from around the world, are now available to you anywhere in the world exclusively through Rosco. The complete range, the largest anywhere totaling more than 2000 designs in sizes for virtually every known fixture, gives the designer unsurpassed flexibility and creativity when selecting patterns to suggest scenery, create atmosphere and generally enhance the visual impact of the lighting design.

Shown here is a small selection of the most popular images. To browse the entire range of designs, visit the Rosco website at www.rosco.com/uk/gobos or request the Rosco Gobo Catalogue.

Standard sizes for most profile and automated luminaires are available. A complete list of sizes can be found on the website.



77777 BARE BRANCHES 2 David Hersey	77794 FOREST STAGE LEFT Tom Sturge & David Summer	78218 SUMMER BRANCHES	77797 THICKET Francis Bellman	77734 PINE TREES Marsha Eck	77206 FOREST FLOOR Paul Sweeney	77205 FOREST TOP Paul Sweeney	77793 FOREST STAGE RIGHT Tom Sturge & David Summer
//862 SPOOKY WOOD	//2/1 TWIGS Andrew Bridge	//15/ IRREGULAR LEAVES Peter Maradudin	//85 SHARP BREAK (MEDIUM) Tom Skelton	//100 TREE 2	/8219 WRINKLES	//35 BARE BRANCHES 1 Robin Wagner	//550 MARTIN GUERRE BRANCHES 2
//731 JUNGLE LEAF Jo Mielziner	//281 OPEN PALM Andrew Bridge	//551 PINES	/8222 MOONLIGHT LEAVES	//81 BAMBOO Tom Skelton	//30 PALM Marcia Madeira	//838 PALM TREE	//222 TROPICAL PALM Leon Rosenthal
//49 ARCADIA 23 Richard Nelson	//642 TRIANGLES (SMALL)	//284 KINETIC BURST Mike Baldassari	//418 CRACKLE	//38/ REQUIEM	/8253 SQUIRMS (NEGATIVE) KC Hooper	/8251 THORNS KC Hooper	/823/ FINGERS Don Darnutzer
77583 CIRCLES	77754 ARABESQUE Boris Aronson	78232 CHICKEN SCRATCH	78226 WOODCUT	77564 LOOSE WEAVE	77710 FINE MESH Sholem Dolgoy	77750 ARCADIA 17 Richard Nelson	77748 SPLINTERS Dennis Parichy
77275 PIPES KC Hooper	77285 POP TOP Abigail Rosen Holmes	77787 COBBLESTONES Ed Wittstein	77527 BRICKS	77411 CROSSWORD	77221 FLOATING SQUARES David Davidian	77743 URBAN BREAKUP Richard Nelson	77204 BASKET WEAVE Kirk Bookman



Because it's always useful to have a selection of gobos to hand, Rosco has created three pre-defined gobo packs based upon their best selling images. Choose from Breakups, The World Around Us or Graphics, select your preferred size and drop them into your production box 'just in case'. These kits are excellent value for money and bring a little extra peace of mind.



Custom Gobos

Custom gobos can be made from virtually any artwork in just a few days. Sizes for most profile and automated luminaires are available.

- Custom Stainless Steel gobos can be manufactured quickly and inexpensively and are perfectly suited for less complex designs.
- Black and White Glass gobos allow fine details and greyscale images to be reproduced in both positive and negative backgrounds.
- Simple one or two-colour images, as well as full-colour photographic designs, create dramatic impact when projected.

Rosco custom gobos are manufactured to the highest quality standards, with prompt and attentive customer service and are priced to be affordable on even the smallest budgets.

FOR ALL INFORMATION ON ROSCO CUSTOM GOBOS

1. Phone +44 (0)20 8676 6866
2. Fax: +44 (0)20 8659 3153
3. E-mail: customgobo@rosco-europe.com

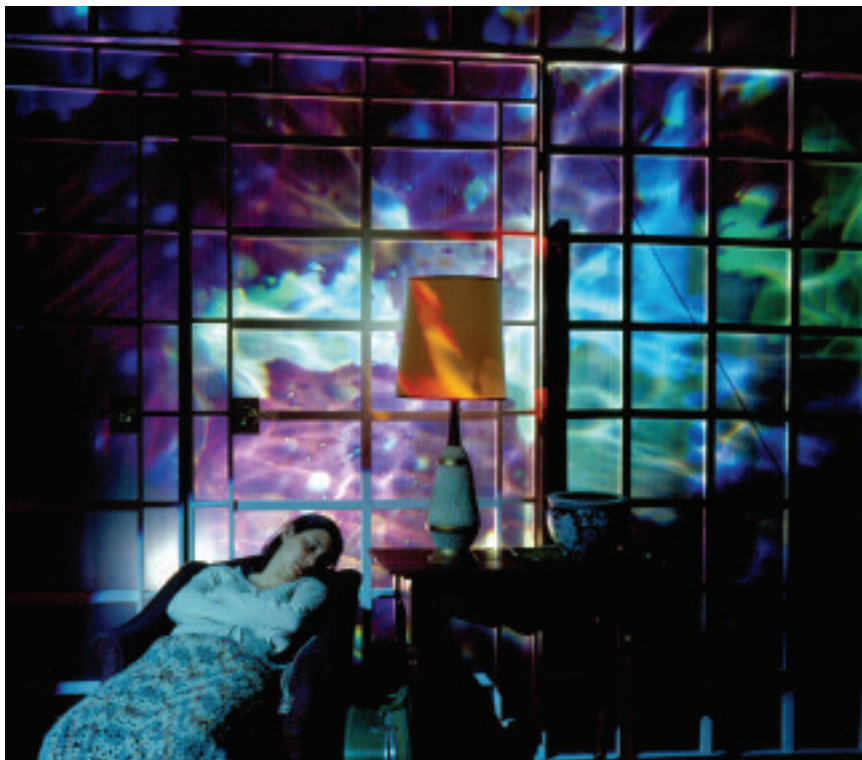
Web Order Form:

www.rosco.com/customgobo/orderform.html

Colorizers™

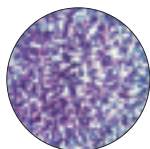
Rosco's Colorizers can be used to create beautiful multi-coloured projection effects. Coloured in gentle hues in one of three styles—stippled, featherlight, or free flow—Colorizers can be used alone or combined with a steel pattern for a more dramatic effect.

Colorizers are recommended for use in fixtures up to 1000 watts and require the use of either a Glass Gobo Holder or the Universal Iris Slot Holder. Colorizers are available in standard B Size or in smaller sizes for automated luminaires by special order. Designs marked with an asterisk* are available in X Size for use in the Rosco X24 X-Effects Projector.

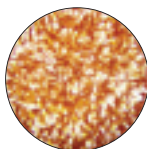


A stunning use of Colorizer gobos. Here, they are used with steel gobos to provide shape and additional texture.

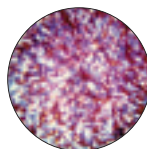
Stippled Series



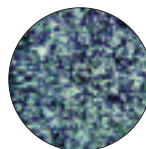
*No. 55004
Blue and Lavender



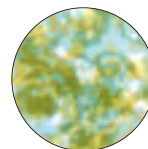
*No. 55005
Amber and Red



*No. 55006
Red, Blue and
Lavender



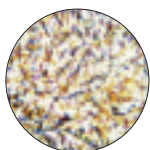
*No. 55007
Green, Blue and
Lavender



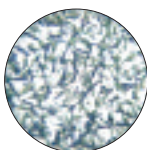
*No. 55008
Green and Yellow

Featherlight Series

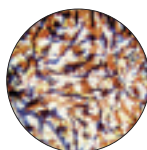
Similar to the Stippled Colorizers, but with a less dense "feather duster" pattern to allow more white light through.



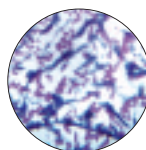
No. 56201
Blue, Lavender and Yellow



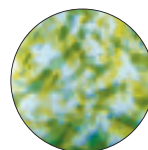
No. 56202
Blue and Green



No. 56203
Red, Lavender and Yellow



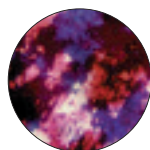
No. 56204
Blue and Lavender



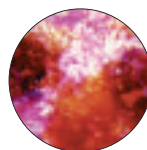
No. 56205
Green and Yellow

Free Flow Series

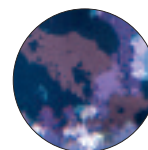
A combination of colours smoothly blended together in a unique, flowing design.



*No. 56101
Cool:
Blues, Reds and Lavenders



*No. 56102
Warm:
Red, Ambers, Blues and Lavenders



*No. 56103
Midnight:
Blues, Lavenders and Greens

Image Glass™

Rosco's Image Glass is deeply textured glass that refracts and bends light into intricate patterns of light and grayscale images. Altering the sharp focus of the fixture transforms the image into subtle and complex textured shadows.

Image Glass is recommended for use in moving lights with lamps up to 1200 watts. In ellipsoidal fixtures, Image Glass should be used with a 600 watt lamp, though short term use with lamps up to 750 watts may be acceptable. Image glass requires the use of the Universal Iris Slot Holder.

Image Glass is available in standard B Size or in smaller sizes for automated luminaires by special order. Designs marked with an asterisk * are available in X Size for use in the Rosco X24 X-Effects Projector.



The Irregular Strands Image Glass gobo (No. 33607) provided the basic texture for this stage picture. A standard steel gobo, Interlocking Breakup (No. 7288) added definition.

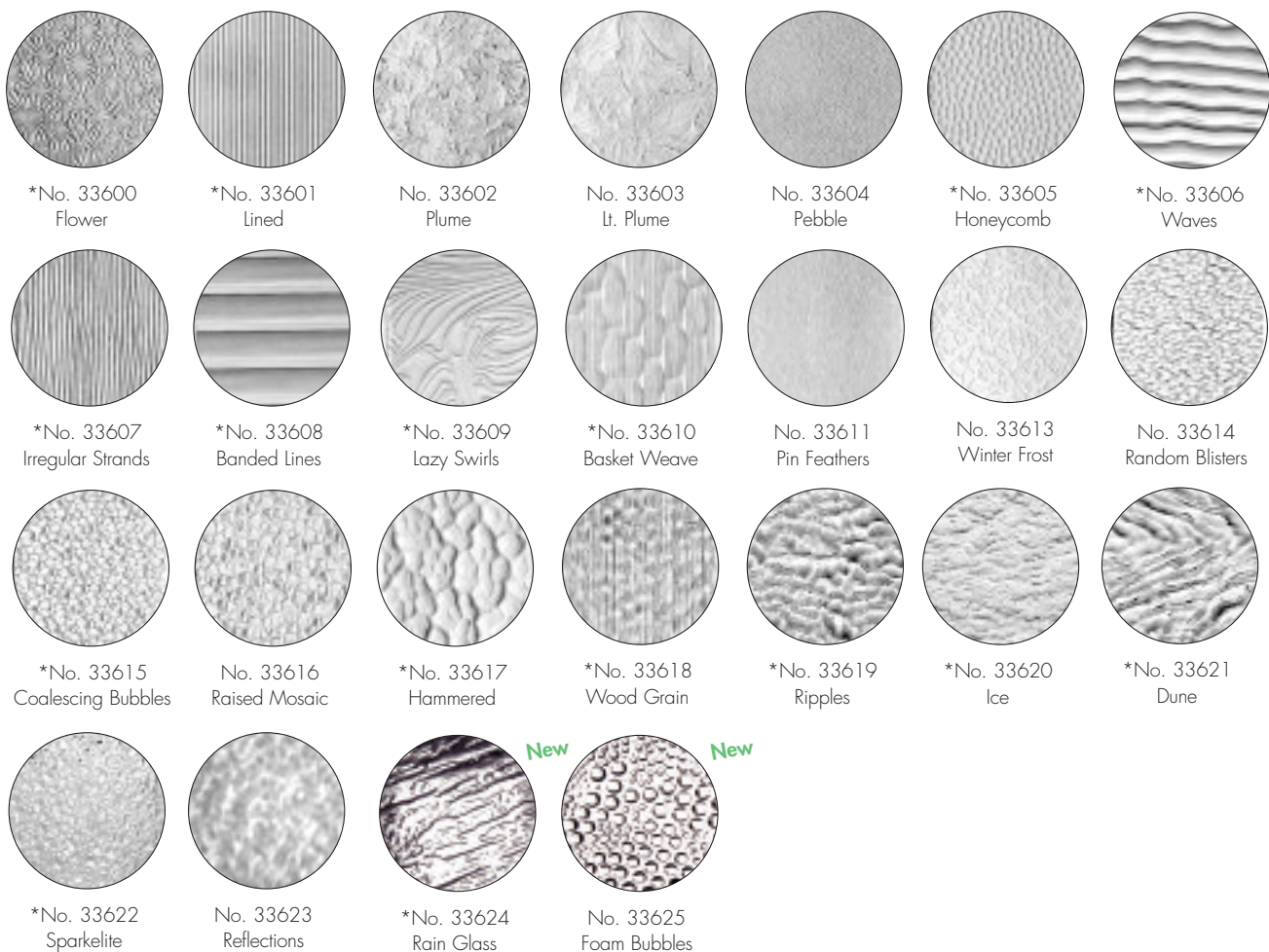


Image Glass gobos are supplied with metal retaining rings to facilitate their use in specific instruments.

Prismatics™

Prismatics are recommended for use in moving lights with lamps up to 1200 watts. In ellipsoidal fixtures, they should be used with a 600 watt lamp, though short term use with lamps up to 750 watts may be acceptable. Prismatics require the use of the Universal Iris Slot Holder.

Prismatics are available in standard B Size or in smaller sizes for automated luminaires by special order. Prismatics are NOT available for use in the Rosco X24 X-Effects Projector.

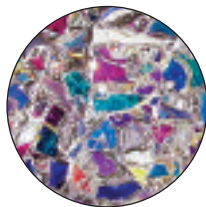
*Tip: When combined with a steel gobo, make sure the steel gobo is furthest from the lamp.



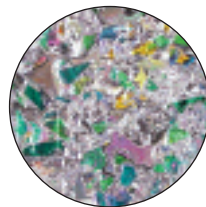
The Kaleidoscope Prismatic gobo (No. 43801) projected on the stage floor can emphasize both the time of day and the mood on stage. It's shown here on the set of "Crazy Mary", a Playwrights Horizon production with set design by John Lee Beatty and lighting design by Brian Aldous. Note the careful use of shuttering and focus to heighten the effect.



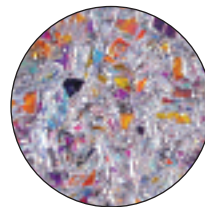
No. 43801
Kaleidoscope



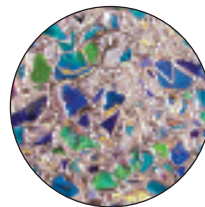
No. 43802
Cool Lavender



No. 43803
Spring Greens



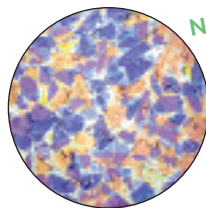
No. 43804
Sunset



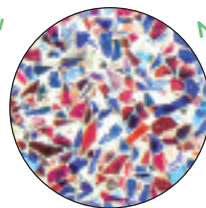
No. 43805
Blue Water



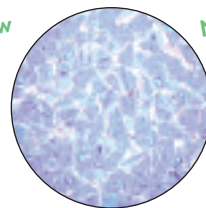
No. 43806
Flaming Sun



No. 43807
Warm Contrast



No. 43808
Patriotic



No. 43809
Crystalline

ColorWaves™

Rosco's ColorWaves are a new idea in glass gobos help create vibrant coloured textures and shapes. Each glass texture—Waves, Strands, Ripple or Mosaic—is coated in one of five brilliant dichroic colors. The projection is a remarkable and unique combination of colour, texture, shading and blending.

ColorWaves are recommended for use in moving lights with lamps up to 1200 watts and in ellipsoidal fixtures with lamps up to a 600 watts, though short term use with lamps up to 750 watts may be acceptable. ColorWaves require the use of the Universal Iris Slot Holder.

ColorWaves are available in standard B Size or in smaller sizes for automated luminaires by special order. Designs marked with an asterisk * are available in X Size for use in the Rosco X24 X-Effects Projector.

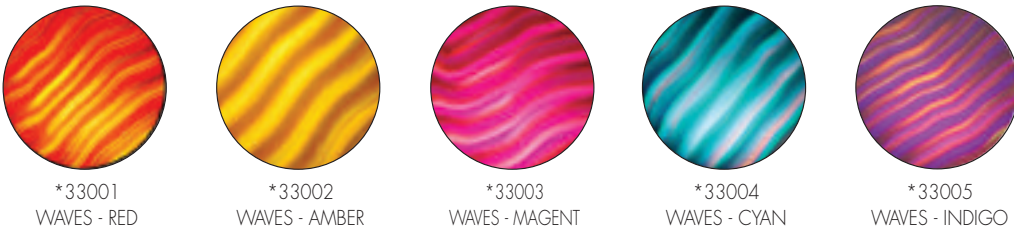


Fireplace flames and the reflections they create are stylishly reproduced here with ColorWave gobos in a Rosco Vortex Rotator. In this application, Indigo Waves (No. 33005) was used in conjunction with Amber Ripple (No. 33102) and the standard steel gobo Flames 1 (No. 77175).

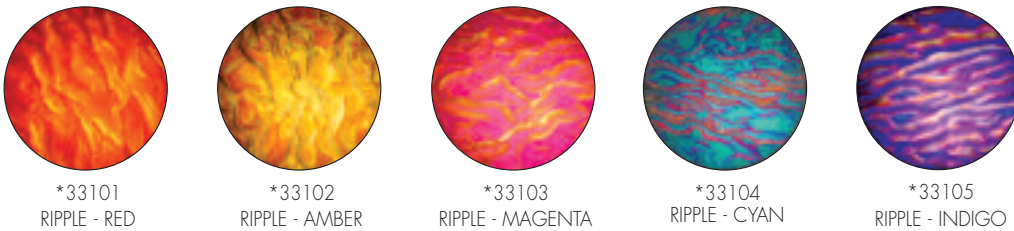
SPARKELITE



WAVES



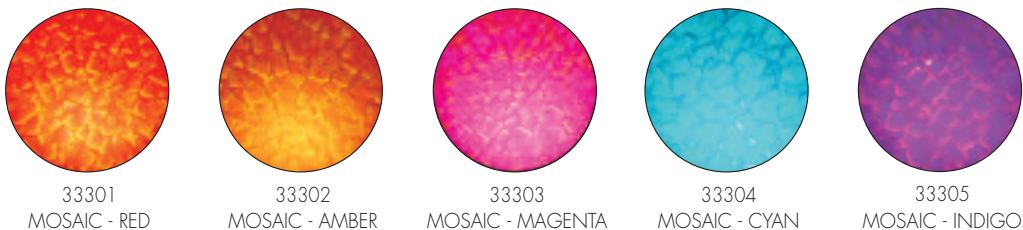
RIPPLE



STRANDS



MOSAIC



UNIVERSAL IRIS SLOT HOLDER

The Universal Iris Slot Holder has been carefully tooled and engineered to fit into many of the new generation of ellipsoidal fixtures including the ETC S4, Altman Shakespeare, Strand SL, and Selecon Pacific Cool Light. An Iris Slot Holder allows a glass pattern to be placed in the Iris Slot of a fixture in the front of the gate, necessary for some thicker glass gobos. In addition the Universal Iris Slot Holder is double sided allowing you to use two gobos, glass and/or steel, in the iris slot at the same time. Use only for 86mm standard B size gobos.

No. 15786

Universal Iris Slot Holder



GOBO HOLDERS

Code	Holder	Gobo Size:	Code	Holder	Gobo Size:
77GH01	CCT Silhouette Project/Lee Colortran Windsor Selecon range/CCT Freedom A	A	77GH42	Novalite Followspot	D
77GH02	As 77GH01	A (Glass)	77GH43	Teatro, Tratto, Tippo	B
77GH03	As 77GH01	B	77GH44	Teatro Acuto	A
77GH05	Strand Harmony, T Spot 263/264 Cantata Optique, Prelude	A (Glass)	77GH46	As 77GH05	M
77GH07	Strand Cadenza, Solo, Alto, Toccata	A	77GH47	As 77GH21	A (Glass)
77GH08	Strand Patt 23/23N, Highlite, Minim Quartet B	B	77GH48	Strand Leko (all models)	B
77GH09	Altman 360Q, 1KL, Shakespeare	B	77GH49	Spotlight Milano Sintesi, 650W Vision 650W	M
77GH10	Strand Patt 765, 793, 794, 293, 294	C	77GH50	Spotlight Milano Sintesi 1200W Vision 1200W	B
77GH11	As 77GH10	A	77GH51	Spotlight Milano Sintesi 2500W Vision 2500W	A
77GH12	James Thomas/TBA 650 Series	D	77GH52	ADB A59Z 500/650W	M
77GH13	As 77GH08	D	77GH53	As 77GH05	M(Glass)
77GH14	Microlight Microprofile	E	77GH54	RDS Projector	A
77GH15	CCT Minuette, Zero 88 Focus ADB, DS54, DW54	M	77GH55	As 77GH15	M(Glass)
77GH16	Berkey Ellipsodial	A	77GH56	ETC Source Four	B (Glass)
77GH17	As 77GH16	B	77GH57	As 77GH34	A (Glass)
77GH18	Berkey Mini Eclipse	A	77GH58	Robert Juliat 6145, 7145, 914SN	B (Glass)
77GH19	As 77GH18	B	77GH59	ETC Source Four	B
77GH20	As 77GH18	A (Glass)	77GH60	Selecon Acclaim	M
77GH21	Niethammer Enisport & Enizoom Series	A	77GH61	ETC Source Four	A
77GH22	Pani Profile	A	77GH62	ETC Source Four	A (Glass)
77GH23	R & V Profile	A	77GH63	ETC Source Four Junior	M
77GH24	ADB 1K (except Europe Series)	A	77GH64	ETC Source Four Junior	M (Glass)
77GH25	ADB 2K (except Europe Sereis)	A	77GH65	Moonspot, Spotlight 1.5K/3K	A
77GH26	Pani BP Projector	A	77GH66	Moonspot, Spotlight 1.5K/3K	B
77GH27	As 77GH26	C	77GH67	Moonspot Spotlight 1.5K/3K	M
77GH28	Berkey Color Arc Follow Spot	M	77GH72	Selecon Pacific	A
77GH29	As 77GH21	B	77GH73	Harmony, T.Spot, 263/4, Prelude, Cantata, Optique, Brio, SL Range	B
77GH30	Times Square MR75, MR75Z	E	77GH78	Selecon Pacific	B
77GH33	As 77GH08	M	77GH79	Selecon Pacific	B(Glass)
77GH34	ADB Europe Series	A	77GH80	Selecon Pacific	A(Glass)
77GH35	As 77GH05	B (Glass)	77TADA	Tadpole A Size	
77GH36	As 77GH07	B	77TADB	Tadpole B Size	
77GH38	As 77GH01	B (Glass)	77TADM	Tadpole M Size	
77GH39	As 77GH21	B (Glass)			
77GH41	Teatro Comma, Coemar Accento	M			

Refer to Rosco's Gobo Catalogue for full details

Designing With Gobos - Master Class™ Video Programme - now in DVD format

Neil Peter Jampolis, the famed lighting designer and teacher, hosts this informative and entertaining video programme. Neil and his colleagues show you how to use gobos to create theatrical fire, rain and reflected water, church windows, fireworks and dozens and dozens of other effects. You'll learn how gobos can add life, movement and even colour to your stage pictures. In just 25 fast-paced minutes, you'll see the effects assembled and demonstrated, so you can reproduce them in your own way, in your own venue. This video will provide ideas, information and inspiration for anyone lighting for theatre, film, television, live entertainment or architectural purposes.

No. 35807000 "Designing With Gobos"
(DVD, 25 minutes)



Rosco Donuts

Donuts are low cost accessories whose purpose is to reduce or eliminate the halation around projected gobos and thus sharpen the image. Rosco's donuts are carefully crafted in sturdy metal for long life. They are precisely tooled to fit the lighting instrument's slot.

No. 12DONUT 15.8cm fits Source 4/Altman
Shakespeare



Guide to Motion Effects

Rosco's 38 page guide to moving images, animation, rotation, control, power supplies and projectors as well as effects ideas is an invaluable tool for any designer. Copies are free from Rosco, just give us a call.

X24 X-Effects Projector

The X-Effects Projector provides large scale 3-D effects previously unavailable to lighting designers. The device utilizes a 200-watt Enhanced Metal Arc source, whose short arc allows for an output of 5000 lumens, and a 7000 hour lamp life. The colour temperature is similar to a Xenon source at 6000°K, but with nearly two times the luminous effectiveness (or efficacy).

The effect itself is created by rotating two "X" size glass gobos off-center of the optical path. This results in a projection that does not appear to have a visible direction or pattern. Onboard potentiometers control the speed and direction of both gobos.

Rosco upgraded this product in 2007 and now provides the X24 model exclusively. It offers the same effects as the original, but its re-engineered components make it far more durable.

The X-Effects Projector is available in two configurations. For theatrical entertainment lighting, specify the model with DMX on board. Using five DMX channels, the unit has full control of effect gobo, lamp strike and light output. For retail or museum displays, where DMX is not usually required, specify the analogue model. All units are equipped with a lamp and a customer-chosen lens train.



No. 205 37015 0120 X24 X-Effects Projector – DMX
No. 205 37020 0120 X24 X-Effects Projector – Analogue

Also available in white, by special order



The designers at Focus Lighting found a brilliant solution to projecting rippling water on the ceiling of The Pier in Caesars Atlantic City. X-Effects Projectors, mounted down the length of the mall shopping area, gave them the effect they wanted. Photo by J. R. Krauza.

Vortex 360 Dual Rotator™

The Vortex 360 Dual Rotator is one of the most versatile accessories ever offered to lighting designers. And its incredibly low price makes it possible for any theatre or venue to have several units available to cover any space or meet any need.

The sleek unit houses two carefully crafted gear drives, both made of stainless steel, to assure long term operation. A single silent motor drives both gear assemblies. Even at full speed, the Vortex 360 Dual Rotator is so quiet it can be used anywhere in a theatre or venue - including front-of-house positions in a theatre or grids on low ceilings in restaurants or stores.

This Plug and Play model of the Vortex 360 does not require any additional power supply. The transformer/plug that comes with it can be plugged directly into a wall outlet. Or, using a low cost adapter, into any convenient dimmer.



The Vortex 360 Dual Rotator will fit the iris slot of the ETC Source Four, the Altman Shakespeare, Strand SL and the Selecon Pacific. It will accept standard B size (86 mm) steel or glass gobos.

The Vortex 360 includes a three-way toggle switch, discreetly located just under the handle. The switch allows you to turn the unit off and on and to control polarity. The front and rear gears rotate opposite each other—but the switch allows the user to determine whether the front or rear will operate clockwise.

A potentiometer knob provides manual control of the speed of rotation.

No. 205 83000 0000 Vortex 360 Dual Rotator

No. 205 83100 0000 Juliet Vortex 360



Standard steel and glass (Colorwave) gobos were used in Vortex rotators to create the interesting and kinetic reflected fire effect on the upstage wall.

Indexing Rotator™

Rosco's Indexing Rotators are Double and Single Gobo Rotators which allow you to stop and start the gobo's rotation precisely, whenever and wherever you want. This is particularly useful for repetitive effects, such as the hands of a gobo clock, or for architectural effects, such as a shop display window. Rosco's Indexing Rotators are controlled through DMX512 and the DMX addressing facility is built into the unit. You control both the speed and direction of the rotation as well as the indexing position (up to 180 degrees available) and the amount of time the gobo stays in that position. A Power Supply Unit is necessary to get 24v DC to the Indexer(s).



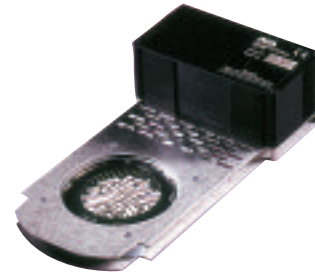
- No. 781RTR003/V Single Indexing Gobo Rotator
- No. 781RTR203/V Double Indexing Gobo Rotator

Double Gobo Rotator™

Rosco's Double Gobo Rotator allows you to achieve kinetic and often spectacular lighting effects by rotating two gobos in the same or opposite directions, at the same or varying speeds.

The exceedingly quiet operation of this 1.13kg unit allows it to be used in virtually any lighting position. This model provides forward and reverse rotation of each gobo in the same or opposite directions.

This rotator fits the Selecon Pacific, the ETC Source Four, the Altman Shakespeare or 1K. It requires a controller or MFX Control Adaptor.



- No. 20RTR204/V Double Gobo Rotator —
- DC Vari-Speed, 0-9 RPM

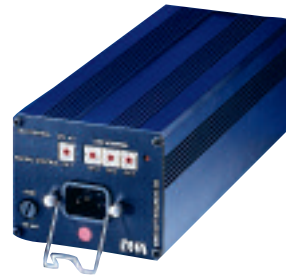


The arresting effect in the window of this set was created with Rosco's standard steel Dots Breakup (Medium) gobo 77053 in one slot of the rotator and the Sunset Prismatic (glass) gobo 43804 in the other slot.

DMX/DC Controller

The Rosco DMX/DC Controller provides power and speed control for the Double Gobo Rotator or other variable speed effects. It is intended for remote control via a DMX512 signal. The output circuitry of Rosco's DMX/DC Controller is identical to that of its four channel Variable Speed Controller. Speed, range, bi-directional drive, load compensation and output protection are all maintained. The advantage is in accuracy and repeatability as well as the convenience of the DMX system. Effects can be programmed with other lighting directly into a cue sequence on a suitable lighting console.

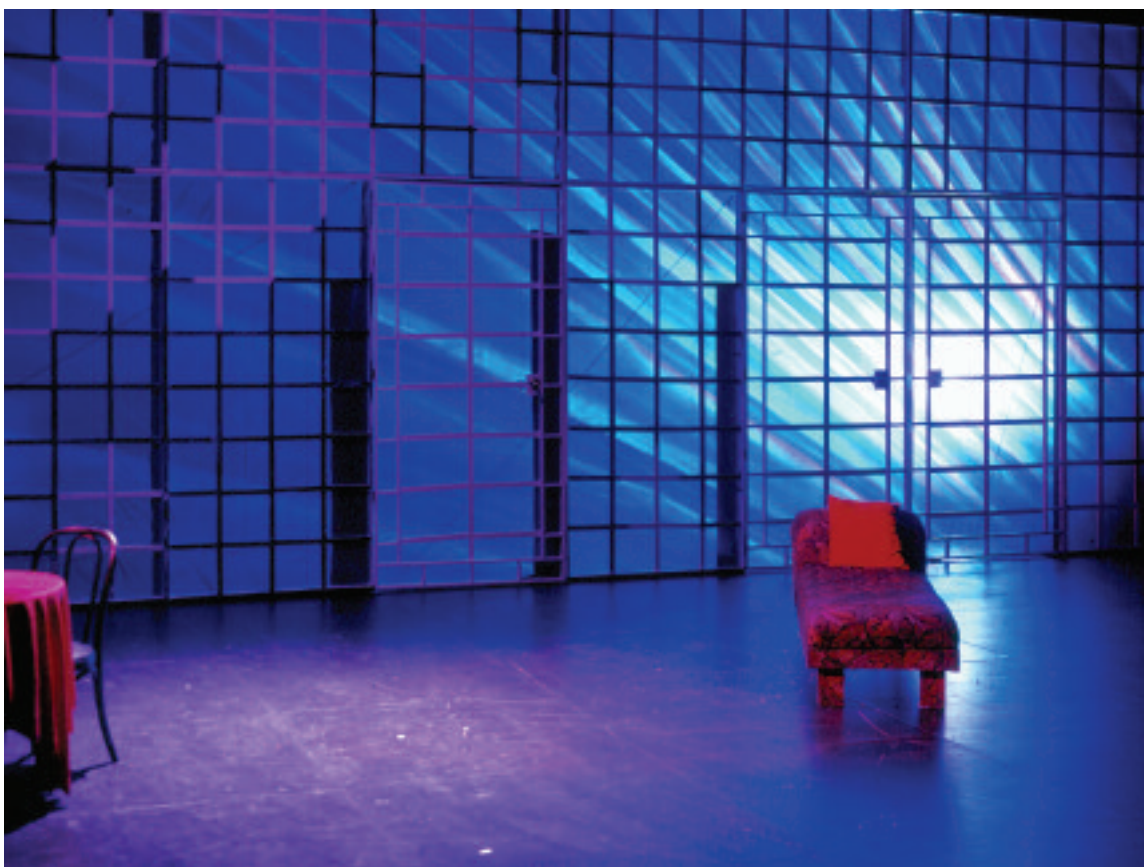
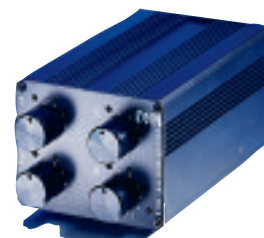
No. 78DCON/DMX DMX/DC Controller



Variable Speed Controller

This four channel Variable Speed Controller is designed to provide power, direction and speed control for Variable Speed Motion Effects units on four independent channels. Output connections are made via four conductor cables terminating in two 4-pin XLR connectors.

No. 78DCON Four Channel Controller



A Rosco Rear Projection screen provides the canvas for the gobo projected on the upstage wall. Note the gobo projections on the stage floor, as well.

Infinity™

The Infinity,™ Rosco's new gobo animation device, offers superb kinetic lighting effects combined with simplicity of use and low cost. The Infinity device affixes to the gel frame of virtually any spotlight. Affix one of the disks to the device, place a steel or glass gobo in the gate, plug the Infinity into an outlet or dimmer and watch magic appear on your stage or studio. The Infinity is equipped with onboard control of the Animation Disk speed and direction, as well as an on/off switch.

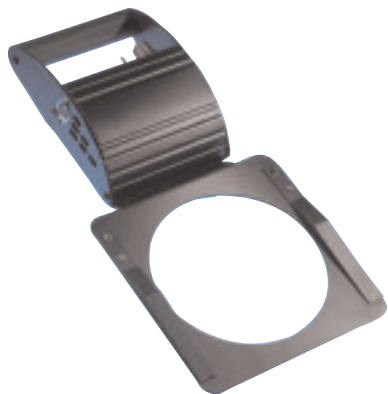
The Infinity device is entirely self-contained. You won't need additional controllers or power supplies. It will fit the gel frame of luminaires such as Altman 1-K and any fixture with a 19.05cm gel frame. It is also supplied with an adaptor plate for Source-4 sized fixtures or any spotlight with a 16.51cm gel frame.

Power

100-120VAC or 220-240VAC. 50-60Hz plug-in transformer, onboard, user selectable.
Power consumption: 500mA.
Power Cord: 1.32m

No. 205 82500 0000 Infinity

Supplied with an adapter plate and one Animation Disk.



The Infinity fits the gel frame of virtually all the spotlights in use today. It is entirely self-contained and does not require additional controllers of power supplies.



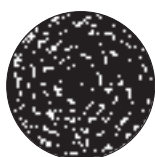
Rosco's Infinity was affixed to two overlapping spotlights to generate this realistic rain effect. Both spotlights included a Water 1 gobo (No. 7833) in their gates. The Infinity in one unit was disk 30019, in the other disk 30011.

Animation Discs

Animation discs are etched stainless steel discs powder coated to prevent reflection. Eleven designs are available. The discs are 42cm in diameter.



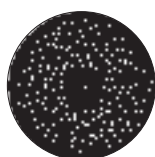
30015
TRIANGLE BREAKUP



30016
CLOUD BREAKUP



30017
ELLIPTICAL BREAKUP



30018
DOT BREAKUP



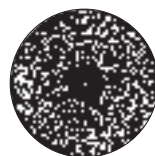
30019
FLICKER WHEEL



30020
COARSE RADIAL
BREAKUP



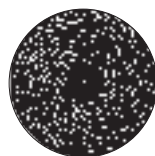
30021
COARSE TANGENTIAL
BREAKUP



30011
TANGENTIAL BREAKUP



30012
RADIAL BREAKUP



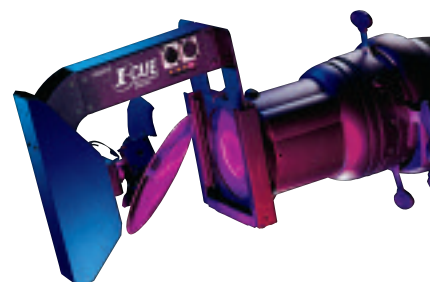
30013
SPIRAL BREAKUP



30014
LINEAR BREAKUP

I-Cue Intelligent Mirror™

The Rosco I-Cue Intelligent Mirror is an ellipsoidal spotlight attachment that allows you to use your spotlight with much greater flexibility and control. The unit slides into the colour slot of the ETC Source 4, Altman Shakespeare, Strand SL and Selecon Pacific. The major function of the unit is to re-position the beam of light so a single spotlight in a fixed position can be used for multiple specials in dozens of locations. With its onboard DMX the unit is controlled directly from your lighting console giving you precise control of the mirror's pan and tilt motion. A Power Supply Unit is necessary to get 24v DC to the I-Cue and you can daisy chain multiple units from one Power Supply. Rosco's I-Cue is compatible with many common PSU's already available including: Wybron-Forerunner PSU; Rainbow-Mini, Maxi, and Micro PSU's; Christie Lites-Color Q PSU; AC Lighting-Chroma Q PSU. Rosco also offers a line of Power Supply Units which are specifically designed for optimal compatibility for both I-Cue and Indexers. (See page 41.)



No. 81000 0120

I-Cue



DMX Iris ^{New}

Having complete control over the beam spread of your leko just got easier. The new Rosco DMX Iris is quiet, dependable, affordable, and a perfect complement to the I-Cue Intelligent Mirror. This 24 leaf motorized iris unit can be used with your ETC Source Four, Selecon Pacific or most other modern lekos. Unlike other iris units that have only 18 or fewer leaves in the aperture, the Rosco DMX Iris creates an even edged, perfectly round aperture all the way down to its smallest diameter. Using 1 channel of DMX512, the DMX Iris's movement is smooth even along very slow cross fades. A microprocessor controlled stepper motor connects to the mechanical arm of the iris unit, replacing the unreliable noisy chain drive system found in other products. A manual knob lets you use the DMX Iris without DMX control just by dialing in the aperture size you want, just as you would a conventional iris unit. The Rosco DMX Iris requires a non-dim circuit and is auto-sensing from 100-240 volts for use anywhere in the world. No costly external PSU is needed.

No. 205 74500 0000

DMX Iris



LitePad™ High Output & Daylight

Now you can get all the output you need from Rosco's LitePad. The upgraded product, LitePad™ HO (High Output) offers illumination that is 35% brighter than previous versions of LitePad. A number of accessories, including dimmers, are now available as well.

Like the original, LitePad™ HO is a slim profile light that creates a soft, even source of light. Its small form factor and light weight make LitePad™ HO perfect for use in many locations where larger conventional luminaires simply cannot fit. LitePad™ HO is also used for 3-point studio lighting in both video and still photography. Accessories, such as dimmers, battery packs, mounting brackets, adaptors, and even egg crates help make LitePad™ HO a versatile "everywhere light"

For less demanding projects, LitePad™ DL (Daylight) consumes 25% less energy while still providing the soft even illumination that has made LitePad™ so popular among lighting professionals. LitePad™ DL was designed with event planners, theatrical lighting and architectural designers in mind.



Litepad™ won the Cinec 2008 Award in the Lighting Engineering Category

SPECIFICATION:

Colour Temperature: 6000° Kelvin
 Thickness: 8 mm
 Operating Temperature -30°C bis +85°C
 Lamp Life: 60,000 hours

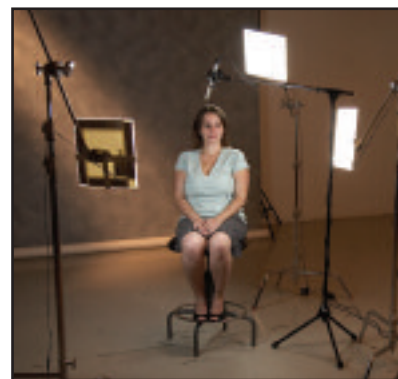
Litepad™ HO

- No. 290203060240 - 76mm x 152mm (3"x6") - 240V
- No. 290203060000 - 76mm x 152mm - no transformer
- No. 290203120240 - 76mm x 305mm (3"x12") - 240V
- No. 290203120000 - 76mm x 305mm - no transformer
- No. 290206060240 - 152mm x 152mm (6"x6") - 240V
- No. 290206060000 - 152mm x 152mm - no transformer
- No. 290206120240 - 152mm x 305mm (6"x12") - 240V
- No. 290206120000 - 152mm x 305mm - no transformer
- No. 290212120240 - 305mm x 305mm (12"x12") - 240V
- No. 290212120000 - 305mm x 305mm - no transformer
- No. 290224240240 - 610mm 610mm (24"x24") - 240V
- No. 290300030240 - 76mm Circle (3") - 240V
- No. 290300003000 - 76mm Circle - no transformer
- No. 290300120240 - 305mm Circle (12") - 240V
- No. 290300120000 - 305mm Circle - no transformer

No. 2902 4000 BKIT LitePad™ HO Basic Kit
 No. 29024000 GKIT Gaffer Kit
 To view contents of the Gaffer Kits go to:
www.rosco.com/uk/video/litepad_ho.asp



LitePad HO is now available in eight standard sizes, including a 305mm circle, shown here.



LitePads being used on set

Litepad™ DL

- No. 290103030240 - 76mm x 76mm (3"x3") - 240V
- No. 290103030000 - 76mm x 76mm - no transformer
- No. 290103060240 - 76mm x 152mm (3"x6") - 240V
- No. 290103060000 - 76mm x 152mm - no transformer
- No. 290103120240 - 76mm x 305mm (3"x12") - 240V
- No. 290103120000 - 76mm x 305mm - no transformer
- No. 290106060240 - 152mm x 152mm (6"x6") - 240V
- No. 290106060000 - 152mm x 152mm - no transformer
- No. 290106120240 - 152mm x 305mm (6"x12") - 240V
- No. 290106120000 - 152mm x 305mm - no transformer
- No. 290112120240 - 305mm x 305mm (12"x12") - 240V
- No. 290112120000 - 305mm x 305mm - no transformer

Rosco offers two accessories for fading. The single fader dimmer (shown here) is a compact unit that connects in-line with the LitePad HO and transformer and fits in the palm of an operator's hand. See the Rosco web site for a complete list of LitePad HO accessories.



Power Supply Units

Rosco's power supplies are compatible with nearly all the colour scrollers, gobo rotators and other accessory devices in common use.

The most powerful device, PSU-400, will provide a constant load of 400 watts (non-constant load of at least 500 watts). It can thus provide power to any combination of scrollers, rotators or other devices requiring 400 watts of power.



PSU-400

The PSU-400 is a 48cm rack-mount module, equipped with four XLR outputs and four returns. The PSU-200 also has four outputs and four returns. It can be pipe mounted with a C-Clamp or other hanging device.

The Rosco PSU-400 includes a triple fan cooling system to allow continuous service through the show, without fear of interruption.

Rosco power supplies are RDM upgradeable (pending the completion on the RDM specification).

- No. 205 71402 0400 PSU-400
- No. 205 71402 0200 PSU-200
- No. 205 71402 0050 PSU-50



COMPATIBLE EQUIPMENT	POWER NEED WATTS:
Rosco I-Cue	17 watts
AC Lighting/Apollo Chroma Q Broadway	22 watts
AX Lighting/Apollo Chroma Q M1, 2, 5, 8	36 watts
Apollo Roto-Q	12 watts
City Theatrical DMX Iris	8.5 watts
DHA Indexing Single Rotator	6 watts
DHA Indexing Double Rotator	6 watts
DHA MK2 Indexing Rotator	30 watts
Rainbow 6", 8", 12" Pro Colour Scroller	14 watts
Rainbow 15" Pro Colour Scroller	29 watts
Gam Indexable Twin Spin	14.4 watts
Gam SX-4, 6 Gobo Tray	10.8 watts
Wybron Forerunner	14 watts
Wybron Lightwand	10 watts



PSU-200

Rosco's iPro™ Image Projector system offers users an easy, inexpensive solution for projecting photographic quality images in a theatrical environment. The system consists of the iPro™ Image Projector, a precisely engineered accessory which fits the iris slot of most modern spotlights (see below) and the iPro Slides. iPro slides can be prepared from virtually any electronic art work, or can be chosen from the array of library images available or can even be prepared in your own facility on an ink jet printer. (See next page for details.)

iPro Image Projector

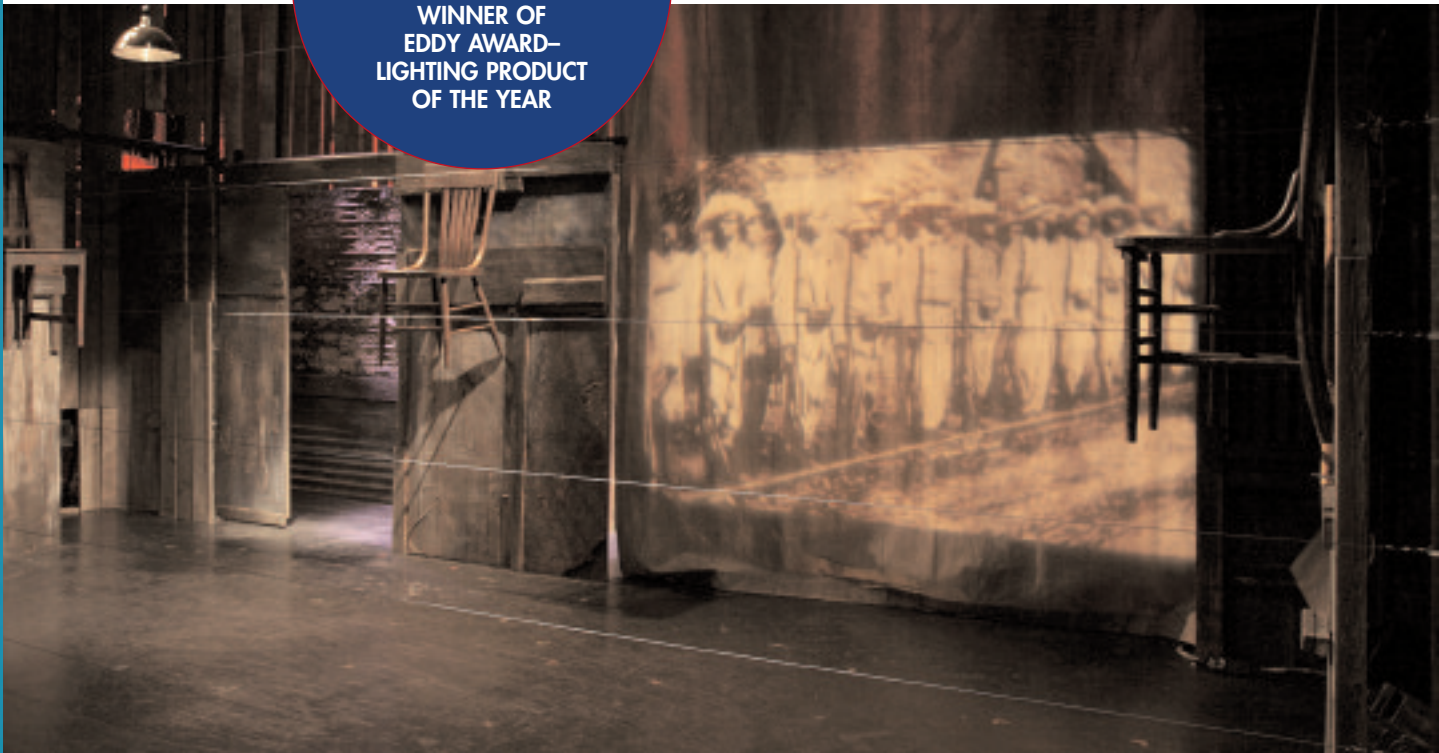
The iPro™ fits as an accessory into the iris slot of a typical ETC Source Four, Altman Shakespeare, Strand SL or Selecon Pacific light fixture. Fitted with an iPro Slide, the iPro™ delivers bright, visible full-colour images that will last between 15 and 50 hours.

No. 265 25100 0240



WINNER OF
LDI AWARD
FOR PRODUCT OF THE YEAR—
SCENIC EFFECTS

WINNER OF
EDDY AWARD—
LIGHTING PRODUCT
OF THE YEAR



The i-Pro slide projected on the back wall was created by the design/production team from a photo in a magazine.

Hybrid Two-Fer

This optional accessory allows you to connect the iPro and your light fixture into the same dimmer. The two-fer is configured with a male stage-pin connector for the dimmer and both a female stage pin connector for the light and a female parallel blade connector for the iPro.

No. 265 25500 0000

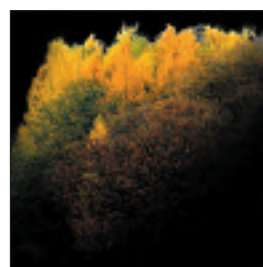
iPro is protected under U.S. Pat No.6,793,349 B2



iPro Slide Library

Choose any image from the Rosco iPro Slide Library for use in your iPro™. Designed specifically for the iPro™, Rosco offers images in a wide range of categories that are certain to suit your needs for most theatrical productions and live entertainment events. Fast turnaround makes the iPro Slide Library ideally suited for most designers. To see the designs, browse the CD catalogue included with each ImagePro or visit the Rosco website:
www.rosco.com/uk/gobocatalog/imagepro/library/catalog.html

iPro Slide-Library Image



iPro Slide Film

For use with the Rosco iPro, iPro Slide Film has been formulated from the ground up to produce the highest quality iPro Slide possible. Projections created with this unique coated smooth film will render vivid colors, smooth blends and razor sharp images that far surpass what can be achieved using commercial transparency film.

No. 265 27995 A410 iPro Slide Film—
10 sheet pack (LTR Size)

No. 265 27995 A425 iPro Slide Film—
25 sheet pack (LTR Size)

iPro Printing Pack

No. 265 27985 A410 Contains 10 sheets of iPro Slide Film and 10 One-Time iPro Slide Kits

iPro One-Time Slide Kit

For the unapologetic do-it-yourself technician, Rosco offers the iPro One-Time Slide Kit. This kit contains the slide mount and protective film necessary to make an effective iPro Slide. Using your own transparency film and your own printer to create the image, you can then assemble a finished iPro Slide. The Slide Kit is good for one slide only and is not designed to be re-used for multiple images. Since the quality of inks, printer technologies and plastic films may vary greatly, the performance of a home-made slide may not match those produced by Rosco. Transparency film not included.

No. 265 27999 0860 iPro Slide Kit

**Tip: For best results printing your own iPro Slides, adjust your printer settings to maximum resolution and select an absorbent paper type such as Double Sided Water Colour Paper.*

More detailed advice on printing iPro Slides can be found on the website at:
www.rosco.com/uk/gobocatalog/imagepro/library/techsupport.html

Custom iPro Slide

Virtually any design you can create on your computer can be made into a Custom iPro Slide in just one day. Using Adobe Photoshop or similar software, prepare your design and send it to Rosco at customgobo@rosco-europe.com. Within 24 hours, your finished assembled iPro slide will be on its way back to you. For complete details and instructions on preparing artwork and ordering Custom iPro Slides, see our website at:
www.rosco.com/uk/gobocatalog/imagepro/library/order.html

No. 265 27000 0860 Custom iPro Slide



Keystroke™

Now you can cue such video playback programs as PowerPoint™, Keynote™, Quicktime™, or Windows Media Player and such sound playback programmes as ProTools™, iTunes™, Garageband™ and SFX™ from your light board.

In fact, Keystroke™, Rosco's new hardware/software solution allows your lighting control board to control virtually any software program running on an external computer. These include cues that require Microsoft Word™ or a video player or proprietary software controlling other features such as water effects, fountain choreography or scenery motion control.

Keystroke™, available for both PC or Mac, is easy to install, easy to use and ensures your sound, video and lighting cues are in sync. It may end forever your need to search for extra crew members or volunteers to push buttons on computers.

No. 8608 1005 0000 Keystroke



Keystroke includes a hardware interface, a CD containing the required software and the USB A/B cable to connect the Keystroke box to your PC. The Keystroke box will accept DMX signals from your control board.



The Florence International Theatre Company produced "Agnes Of God" with English dialogue. To make it accessible to Italian audiences, this small theatre company programmed the translation in to PowerPoint™ and they projected the Italian subtitles on the set. Keystroke allowed the house electrician to advance the Italian slides on cues from the light control board.

WINDOWS SYSTEM REQUIREMENTS

Processor Speed	300MHz or faster
Operating System	Microsoft Windows XP
System Memory	128MB RAM minimum
Disk Requirements	8MB hard drive space
PC Interface	USB 1.0 or higher port

MACINTOSH SYSTEM REQUIREMENTS

Operating System	OS 10.3 or higher (Panther)
Processor Type	Power Mac G 3 or better*
Memory Requirements	256 megabytes (MB) of RAM or greater*
Disk Requirements	8 megabytes Interface
One powered UWSB port	

** Faster processor and additional RAM may be required to drive other software running on the system.*

Custom Screen

Rosco will custom cut, weld and finish our screen material to your specifications. Pricing includes grommets on 30.48cm centers, vertical seams, finished edges and a pipe pocket and/or skirt as specified. Unusual shapes are available but may require an additional set-up charge. Delivery in as little as two weeks. All screens are washable and inherently flame retardant.



*Chautauqua Theatre Company (July 2007), "The Just" by Albert Camus
Directed by Ethan McSweeney, Lighting Design by Scott Zielinski*

Unfinished Screen - sold by the metre

1.4m Seamless

1.4m wide. Minimum order is one linear metre

No. 2100	Grey
No. 2101	Twin White
No. 2103	Black
No. 2104	Light Translucent
No. 2116	Sky Blue
No. 2117	Misty Blue

1.5m Seamless

1.5m wide. Minimum order is one linear metre.

No. 2115	Front White
----------	-------------

2.2m Seamless

Rosco's exclusive line of wider seamless projection screens. Minimum order is one linear metre.

No. 2110	Grey
No. 2111	Twin White
No. 2113	Light Translucent
No. 2114	Front White
No. 2118	Sky Blue
No. 2119	Misty Blue

2.8m

Double width continuous rolls of two 1.4m sections welded together. Minimum order is one linear metre.

No. 2105	Grey
No. 2106	Twin White
No. 2107	Black
No. 2108	Light Translucent

Spanfix

This versatile fastener is ideal for attaching grommeted screens to frames. They maintain constant tension across the screen providing a flawless projection surface

No. 2100A	Spanfix
-----------	---------

Roscoscreens Technical Information

Type	Features	Widths Available		
		1.4m	2.2m	2.8m
Black	Often used in situations with high quantities of ambient light. Fine detail resolution when back lit with a strong image. Inconspicuous in the framework of a set.	•		•
Grey	Wider viewing angles for rear projections. Neutral colour.	•	•	•
Twin White	Rosco's most widely used screen; can be used as a front or rear projection surface, with no apparent difference in picture brightness.	•	•	•
Light Translucent	Very high direct light transmission and bright sharp picture quality with minimal absorption loss. Commonly used in studios and stages for indirect light transmission and diffusion. Also used to reduce the image contrast in situations with high levels of ambient light.	•	•	•
Misty Blue	A moderate direct light transmission with an intriguing faint misty blue colour cast.	•	•	
Sky Blue	A colour which when unlit has a sky blue tone, and of course cool colour in projection; good for large area	•	•	
Front White	Highly opaque, reflective material for front projection.	1.5m	•	

Delta 3000™

The Delta 3000 combines the most reliable, tested components for fog production with the latest electronic ideas for design versatility.

The machine is a triumph of solid engineering and design sensitivity. It not only produces greater fog output than any machine in its price class, but has a wide range of output applicable for any situation. Using the wide array of Rosco water-based fog fluids, the fog is always dry and controllable. The major components, the heat exchanger and pump, are easily accessible for servicing. The components have both been proven reliable and durable in other Rosco fog systems used intensely in theme parks and other venues around the world.

The Delta 3000 offers DMX as standard equipment, and is available with a choice of three remote control devices. The Digital/DMX Remote allows you to set the DMX address (in one of five languages!). The timers are real time settable with up to 10 minutes of ON time and 10 minutes of OFF time. In addition to DMX control and timers, this remote can operate the fog machine directly. The Analogue/DMX Remote provides the same basic features, but uses an analog interface. For industrial customers who do not require access to DMX, the Timed Remote offers volume control and timers.

- No. 200 13000 0120 Delta 3000 Base Unit 120v (requires remote control)
- No. 200 13000 0241 Delta 3000 Base Unit CE 240v
- No. 200 13000 DDMX Delta Digital/DMX Remote Control Device
- No. 200 13000 ADMX Delta Analogue/DMX Remote Control Device
- No. 200 13000 TIME Delta Timed Remote Control
- No. 200 43000 0000 Delta 3000 Carrying Case
- No. 200 61690 0004 4 inch Hose Adapter
- No. 200 61695 0004 Ducting Hose 10.16cm x 7.64m



This Rosco fog machine has been tested for use in professional theatrical productions and is included under the Equipment-Based Guidelines for the Equity League Pension and Health Trust Funds. For a copy of the appropriate data and more information about using Rosco fog products in professional theatrical productions go to www.rosco.com/uk/fog or contact Rosco directly.



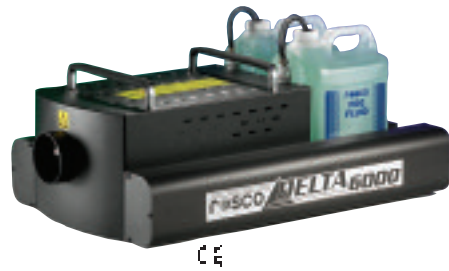
DELTA REMOTE CONTROL SPECIFICATIONS			
	DIGITAL/DMX	ANALOGUE/DMX	TIMED REMOTE
INTERFACE	Digital	Analogue	Analogue
MULTILINGUAL	Yes	No	No
DMX	Yes	Yes	No
TIMERS	ON	10 min.	2 min.
	OFF	60 min	4 min.
LOCAL CONTROL	Yes	Yes	Yes
0-10 VOLT INPUT	Yes	Yes	Yes



Delta 6000™

The Delta 6000 fog machine produces more fog volume than almost any other system and is priced to be affordable to most users. Consuming more than nine liters of fog fluid per hour, this machine was developed to service very large stages, theme parks and particularly the demanding industrial applications that are now a significant market for fog machines. Industrial applications including military training, leak detection and safety training in buildings, aircraft and sea going vessels, demand high-output machines.

The key to the enormous output of the Delta 6000 is a new dual-path heat exchanger. The fluid moves along two paths that maximize the heat stored in the heat exchanger and emerges as fog in two side-by-side nozzles. This allows the machine to produce far more fog than the popular Delta 3000. It uses the same basic electronics as the Delta 3000, including built-in DMX as standard equipment. The Delta 6000 is available in 1500 watt, 120 volts or 2300 watt, 240 volt configurations.



No. 200 16000 0120	Delta 6000 120v Base Unit (requires remote control)
No. 200 16000 0241	Delta 6000 240v Base Unit (requires remote control)
No. 200 13000 DDMX	Delta Digital/DMX Remote Control
No. 200 13000 ADMX	Delta Analogue/DMX Remote Control
No. 200 13000 TIME	Delta Timed Remote Control
No. 200 46000 0000	Delta 6000 Carrying Case
No. 200 64590 0006	15.24cm Hose Adaptor
No. 200 64595 0006	Ducting Hose 15.24cm x 7.62m

**LDI AWARD
WINNER
Special Effects
Product of the
Year**



Model 1700

The Rosco Model 1700 fog machine is a high quality machine—durable, dependable, and with a lower cost.

Every feature of the Rosco Model 1700 has been evaluated and state-of-the-art technology applied to give long-life reliability and high performance. The machine delivers fog output equal to, or more, than previous fog machines, but draws less power—1190W.

The Rosco Model 1700 has a remote control stored on board, with a 4.57m cable and fine control for volume as well as on-board timers. In addition, the Model 1700 can be operated from a lighting control board through an optional DMX interface. Another feature of the Model 1700 is that it can easily be daisy chained, allowing up to 4 machines to be operated from a single remote control. It can be operated with the Rosco Coldflow for low-lying chilled fog and will accept a 4-liter Rosco Fog Fluid bottle.

No. 911011700110 Model 1700 120v with remote
No. 911011700 Model 1700 240v with remote



CE

Model 1900™

Rosco's Model 1900 fog machine is a very high output professional fog machine, designed primarily for industrial applications.

Its most unique feature is the extremely high output, almost twice as much as the Model 1700. With an initial high burst of fog, the Model 1900 will fill the largest venues with fog in a very short time. The Model 1900 offers a volume control as well as on/off timers for automatic sequencing. Up to four machines can be operated from a single remote by running a standard 3-pin XLR cable from machine to machine.

The remote control is stored on the machine and comes equipped with a 15-foot cable. An optional DMX control is available so the unit may be operated from a lighting control console.

No. 200 21900 0115 Model 1900 120v with remote
No. 200 21900 0230 Model 1900 240v with remote



CE



Coldflow™

The Coldflow™ is the best technology currently available to chill fog and create a low-lying effect. First developed by High End Systems, the Coldflow™ uses liquid carbon dioxide, commonly available everywhere, to “make” dry ice inside an aluminium chamber. The output of a fog machine passes through the aluminium chamber and is chilled so that it lays close to the ground. For best effect use Rosco Stage & Studio Fluid. The Coldflow™ can be used with the Alpha 900, Delta 3000, and Model 1700.

Coldflow is a registered trademark of High End Systems, Inc.

No. 8215617000240 Coldflow™ – 240v



Alpha 900™

Rosco’s most economical fog machine is an excellent choice for applications where the effect does not need volume control. A simple on-off switch, in the remote control only, initiates a remarkably powerful stream of smoke. The output from the 1000 watt heater of this compact machine is truly remarkable. Only 5kgs, with a remote power cord of 9.14m, the Alpha 900 is ideal for use at parties or other non-permanent venues. The Alpha 900 carries a standard Rosco warranty and accepts the entire range of Rosco fog fluids.

- No. 200 20900 0120 Alpha 900 – 120v
- No. 89120021 Alpha 900 – 240v
- No. 8215124120050 Alpha 900 Carrying Case
- No. 8211H 10.16cm Hose Adapter
- No. 8211DH Ducting Hose 10.16cm x 7.62m

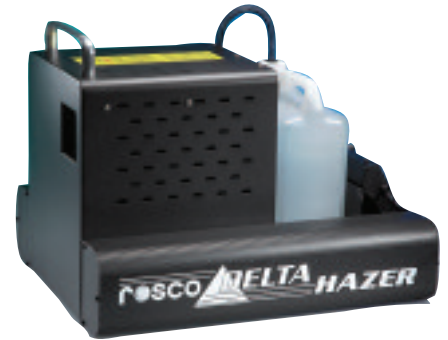
This Rosco fog machine has been tested for use in professional theatrical productions and is included under the Equipment-Based Guidelines for the Equity-League Pension and Health Trust Funds. For a copy of the appropriate data and more information about using Rosco fog products in professional theatrical productions go to www.rosco.com or contact Rosco directly.



Delta Hazer™

The result of dedicated research into haze formation, the Delta Hazer joins the growing line of Delta effects machines. The result is a high-quality haze machine that is quiet, reliable and won't leave oil-based residue in the sensitive electronics of sound and lighting equipment. Based around a new approach to creating atmospheric effects, the Delta Hazer uses a unique water-based fluid formulation, a 1000 watt heat exchanger and a high-quality blower to quickly create enough haze to fill even large venues. Using a single knob, the fan and fluid pump are varied for optimum output and, even at high speeds, offer continuous, quiet haze output.

Using the award-winning Delta Technology™, the Delta Hazer takes advantage of the many unique features built into other dependable Rosco machines: on-board DMX, low fluid sensors, digital timers and control, and most importantly, a self cleaning feature that ensures long life. Like the rest of the Delta line, the Delta Hazer is easy to service and holds a large 4-liter bottle of Delta Haze Fluid.



200 14000 0120	Delta Hazer Base Unit 120v
200 14000 0240	Delta Hazer Base Unit 240v
200 13000 ADMX	Delta Analog/DMX Remote
200 13000 DDMX	Delta Digital/DMX Remote
200 13000 TIME	Delta Timed Remote

**DELTA
HAZE FLUID**

See Page 53

This Rosco fog machine has been tested for use in professional theatrical productions and is included under the Equipment-Based Guidelines for the Equity-League Pension and Health Trust Funds. For a copy of the appropriate data and more information about using Rosco fog products in professional theatrical productions go to www.rosco.com or contact Rosco directly.



Rosco Fog Machine Specifications

	ALPHA 900	Model 1700	Model 1900	DELTA 3000	DELTA 6000	DELTA HAZER
Length	35.6 cm	50.2 cm	57 cm	42 cm	63.5 cm	42.2 cm
Height	15.24 cm	20.3 cm	21.6 cm	17.8 cm	22.9 cm	29.2 c
Width	20.3 cm	24.5 cm	24.8 cm	33 cm	36.8 cm	35.6 cm
Weight	5.2 kg	10.3 kg	12.4 kg	8.41 kg	18.64 kg	7.25kg
Heater	1000 W	1130 W	1500 W	1500 W	1500 W (120v) 2300 W (230v)	1000 W
Power Req.	120v, 10A 230v, 5A	120v, 11A 240v, 5.2A	120v, 15A 240v, 7A	120v, 15A 2240v, 7A	120v, 15A 240v, 10A	120v, 11A 240v, 6A
Remote Cable	9.14 m	4.6 m	4.6 m	15.24 cm	15.24 cm	15.24 cm
Volume Control	No	Yes	Yes	Yes	Yes	Yes
Max. Fluid Consumption	1 liter/hr.	3 liter/hr.	6 liter/hr.	6.5 liter/hr.	9.25 liter/hr.	0.5 liter/hr.
Warm-up Time	5 min.	8 min.	9.5 min.	8 min.	12 min.	2 min.
Reservoir	1 liter	4 liters	4 liters	4 liters	4 liters	4 liters
Air Input	No	No	No	Yes	Yes	
Timers	No	Yes	Yes	Yes	Yes	Yes
DMX	No	Optional	Optional	Standard	Standard	Standard
0-10v Input	No	No	No	Yes	Yes	Yes
Hose Adaptor	10.2 cm	10.2 cm	10.2 cm	10.2 cm	15.24 cm	No
Ducting Hose	10.2 cm x 7.62 m	10.2 cm x 7.62 m	10.2 cm x 7.62 m	10.2 cm x 7.62 m	15.24 cm x 7.62 m	No



Stage & Studio Fog Fluid

For fast dissipating effects. This special formulation offers many of the same features that Rosco Fog Fluid does, with two additional benefits. This water-based fluid, when used with any of Rosco's fog machines, will dissipate more quickly than the standard fluid. This is especially useful for theatrical or video applications where the effect must appear and disappear on cue. When properly chilled (through the use of the Rosco Coldflow), the Stage & Studio Fluid generates an excellent low-lying fog.

No. 200 0830 20010	Litre
No. 200 0830 20025	2.5 Litres
No. 200 0830 20040	4 Litres
No. 200 0830 20050	5 Litres
No. 200 0830 20240	24 x 1 Litres
No. 200 0830 20250	25 Litres
No. 200 0830 22000	200 Litre Drum

Rosco Fog Fluid

Rosco Fog Fluid, for almost 30 years, the most widely used fog fluid in theatre, live entertainment and theme parks. When vaporized, this water-based formulation produces a dense, realistic fog which has no unpleasant odour.

No. 200 08301 0010	1 Litre
No: 200 08301 0025	2.5 Litres
No. 200 08301 0040	4 Litres
No. 200 08301 0050	5 Litres
No. 200 08301 0240	24 x 1 Litres
No. 200 08301 0250	25 Litres
No. 200 08301 2000	200 Litre Drum

Rosco Clear Fog Fluid

Traditional formulation without any scent. For almost 30 years Rosco has sold the familiar Rosco Fog Fluid with its green colour and distinctive scent. Now Rosco offers Rosco Clear Fog Fluid. Rosco Clear delivers the exact same effect as Rosco Fog Fluid, but doesn't have the colorant or scent additives of standard Rosco Fog Fluid.

No. 200 08600 0034	Litre
No. 200 08600 0135	4 Litre Bottle



Rosco's fog fluid won an Academy Award for "... the development of a safe, non-toxic fluid for use in motion pictures ... "

Rosco Light Fog Fluid

A lighter, less dense smoke.

Rosco Light Fog Fluid is one of the latest additions to the Rosco line of fog effects. Utilizing the same components as Rosco's other award-winning fluids, this economical water-based fluid delivers exactly what the name says: a lighter fog effect. It is useful when you don't want the thick clouds of Rosco Fog Fluid.

No. 200 08500 0034 Litre
No. 200 08500 0135 4 Litre Bottle

Delta Haze Fluid

Water-based fluid creates theatrical haze.

Rosco's Delta Haze Fluid is specially formulated to work with the new Delta Hazer. Because it is water based, it leaves no oily residue on people or equipment. When used with the Delta Hazer, it will create a steady, reliable haze to make light beams or other effects more visible.

No. 200 08425 0135 4 Litre Bottle

HEALTH ADVISORY:

Vapour from this fluid, like any other common material in an aerosolized state, may be irritating to or cause allergic symptoms in some persons with allergenic sensitivity. **Do not fog in the presence of known asthmatics.**

Rosco fog fluids have been tested for use in professional theatrical productions and are included under the Equipment-Based Guidelines for the Equity-League Pension and Health Trust Funds. For more information on using Rosco fog fluids in professional theatrical productions go to www.rosco.com or contact Rosco directly.

Off Broadway™

Rosco's best selling paint in a full range of theatrical colours allows everyone to paint drops and scenery with true scenic paint, no matter how limited their budget. This versatile vinyl acrylic paint may be used on a wide variety of scenic materials including hard scenery, foam scenery, drops and ground cloths. It is ready to use right out of the bucket but may be diluted to stretch your paint budget.

Available in: 3.79L pots

No. 5350	White]	Also available in 18.95L
No. 5351	White White]	
No. 5352	Black]	
No. 5353	Yellow Ochre		
No. 5354	Burnt Umber		
No. 5355	Raw Sienna		
No. 5356	Burnt Sienna		
No. 5357	Raw Umber		
No. 5359	Ultramarine Blue		
No. 5360	Fire Red		
No. 5361	Deep Red		
No. 5363	Orange		
No. 5364	Emerald Green		
No. 5365	Chrome Oxide Green		
No. 5366	Lemon Yellow		
No. 5367	Golden Yellow		
No. 5368	Purple		
No. 5369	Magenta		
No. 5371	Pthalo Green		
No. 5372	Sky Blue		
No. 5373	Pthalo Blue		
No. 5374	Imperial Green NEW!		
No. 5376	Brilliant Red NEW!		
No. 5382	Paynes Grey NEW!		
No. 5300	Off Broadway Test Kit		

Available in: 0.473L, 0.946L and 3.79L

Metallic Colours

No. 5383	Bright Gold
No. 5384	Gold
No. 5385	Silver
No. 5386	Copper
No. 5387	Antique Gold

Painting Metallic Colours onto flame-retardant fabrics may cause the paint to tarnish and discolour. Test a small area of paint before proceeding with the entire prop.





Supersaturated Roscopaint™

These brilliant dye-like colours are formulated to be diluted with substantial quantities of water while retaining binder strength. Supersaturated Roscopaint is manufactured with a flexible vinyl acrylic binder to assure excellent adhesion to most scenic surfaces including muslin, plastics and metal. Supersaturated dries to a completely matte, non-reflective finish. Besides drops and hard scenery, Supersaturated may be used on rear projection screen and dance floor. Available in: 1 and 5 Litres

No. 05965	Red	No. 05987	Burnt Sienna
No. 05968	Green Shade Blue	No. 05988	Lemon Yellow
No. 05969	Ultramarine Blue	No. 05989	Turquoise Blue
No. 05971	Chrome Green	No. 05990	Prussian Blue
No. 05972	Emerald Green	No. 05991	Navy Blue
No. 05973	Phthalo Green	No. 05993	Leather Lake
No. 05975	Magenta	No. 05994	Grass Green
No. 05977	Spectrum Red	No. 05996	Cerulean Blue
No. 05979	Purple	No. 05997	Hunter Green
No. 05980	Iron Red	No. 05998	Van Dyke Brown
No. 05981	Chrome Yellow	No. 05992	Paynes Grey NEW!] Available
No. 05982	Yellow Ochre	No. 05974	Imperial Green NEW!] Soon
No. 05983	Raw Sienna	No. 05976	Brilliant Red NEW!]
No. 05984	Moly Orange		
No. 05985	Burnt Umber	No: 6030	Supersaturated Roscopaint Test Kit
No. 05986	Raw Umber		

Supersaturated Concentrated Bases™

No. 6001	Neutral (available in 1 and 5 Litres)
No. 6002	White (available in 1, 5 and 10 Litres)
No. 6003	Velour Black (available in 1, 5 and 10 Litres)
No. 6004	Gloss Medium (available in 1 and 5 Litres)

Note: 6003 Velour Black has a 2.69% reflectance.

Fluorescent Paint

These vivid, vinyl acrylic colours are brilliant in normal light and glow brightly when bathed in ultraviolet light. White fluoresces a light blue under black light. Invisible blue appears milky white under normal light but glows blue in ultraviolet.

Available in: 0.473L, 0.946L and 3.79L

No. 5779	White
No. 5780	Red
No. 5781	Orange
No. 5782	Yellow
No. 5783	Green
No. 5784	Blue
No. 5785	Invisible Blue
No. 5786	Pink
No. 5787	Gold

Note: Test Kit available. 9 piece kit containing 28gm samples of the range of fluorescent paints

No. 5700	Fluorescent Test Kit
----------	----------------------

ClearColour

A revolutionary development in invisible fluorescent coatings. This improved formulation creates designs that are absolutely invisible under normal light, yet glows brightly under ultraviolet light. This remarkable water-based product takes "invisible" to a new level of performance. Available in 0.473 Litres and 0.946 Litres

No. 15006610	Yellow
No. 15006620	Green
No. 15006630	Red
No. 15006650	Blue
No. 15006660	Black

VividFX™

Rosco's VividFX paints represent a stunning development in fluorescent paints and have been designed specifically to meet the demanding needs of the special effects artist. The VividFX series of colours combines a wide palette of 13 colours, brilliant fluorescence and one coat coverage and opacity in one remarkable paint formulation. The exceptional pigments, which glow most brilliantly between 365-380 nanometers, create stunning black light effects and intermix cleanly to provide a wide array of intermediate fluorescent hues.

Formulated in a versatile vinyl acrylic binder, VividFX has excellent adhesion and durability and is water resistant for interior and exterior use. It is best applied by spray gun over a white base coat.

Available in: 0.473L, 0.946L and 3.79L

No. 150 06250	Bright White
No. 150 06251	Lemon Yellow
No. 150 06252	Orange Sunset
No. 150 06253	Orange
No. 150 06254	Scarlet Red
No. 150 06255	Hot Pink
No. 150 06256	Magenta
No. 150 06257	Violet
No. 150 06258	Deep Blue
No. 150 06259	Brilliant Blue
No. 150 06260	Aquamarine
No. 150 06261	Electric Green
No. 150 06262	Deep Green

Note: Test Kit available.



Section of the entrance corridor to "Club Cheri" nite club in Warrenpoint, N. Ireland, an installation by Francis Morgan. See www.francismorgan.com Photograph by Teddy Geber.

Roscoglo™

A phosphorescent water-based paint designed for use in total darkness for stage direction and visual orientation. Roscoglo appears, in the dark, as a distinctive yellow-green light—a 5 cm square is visible up to 9.4 m. Ideal for marking hazardous areas or placing people or props in blackout situations.

- No. 5665 28gm pot
- No. 56614 0.473L
- No. 566510 28g x 12 pots

Colorine™

Technicians have been coloring lamps and glass with Rosco's Colorine since 1910. This popular product is designed for use with a wide range of low wattage bulbs, used in stagecraft and live entertainment. Colours are brilliant and long lasting. Not for permanent installations. Refer to the Supergel Swatchbook for close representation of colour. The two digit number following the colour name is the Supergel match.

Available in: 0.473L

- No. 76011 Cardinal Red (26)
- No. 76021 Ruby Red (27)
- No. 76031 Magenta (49)
- No. 76041 Moonlight Blue (80)
- No. 76051 Urban Blue (82)
- No. 76071 Emerald Green (90)
- No. 76101 Golden Amber (21)
- No. 76151 Canary Yellow (15)
- No. 76171 Clear
- No. 76801 Thinner Pint

Rosco Lay-In Brushes

Rosco Lay-In brushes are available in ferrule widths of 4", 5", 6" and 7". The bristles are made of soft natural hog hair to allow you to paint a clear line without marks or scratches. There is an extraordinary number of bristles packed into each brush's ferrule to permit a full charge of paint on each and every dip into the paint bucket. The bristles are 3/2", longer than those found in commercial brushes, to prevent paint from penetrating the ferrules.



The 5 1/2" handles are high quality hardwood, carefully varnished for durability. The 4", 5" and 6" wide brushes are equipped with removable handles so you can easily switch to longer handles for painting on the floor.

- No. 155 05630 0400 4" Lay-In Brush (10.16 cm)
- No. 155 05630 0500 5" Lay-In Brush (12.70 cm)
- No. 155 05630 0600 6" Lay In Brush (15.24 cm)
- No. 155 05630 0700 7" Lay-In Brush (17.78 cm)



Rosco Fitch Brushes

Rosco's professional quality scenic fitches, often called lining brushes, are available in two handy kits. All brushes feature seamless ferrules and natural bristles for reliable execution and long life.



- No. 661010 1/4" Fitch (0.63cm)
- No. 661110 1/2" Fitch (1.27cm)
- No. 661210 3/4" Fitch (1.90cm)
- No. 661310 1" Fitch (2.54cm)
- No. 661410 1 1/4" Fitch (3.17cm)
- No. 661510 1 1/2" Fitch (3.81cm)
- No. 661610 2" Fitch (5.08cm)
- No. 661810 3" Fitch (7.62cm)

- No. 661710 7 Brush Set
Includes fitches whose ferrule widths are:
1/4", 1/2", 3/4", 1", 1 1/4", 1 1/2" and 2"
- No. 669190 8 Brush Set
Includes all the brushes in the
7 Brush Kit plus a 3" Fitch Foliage

Clear Gloss & Flat Acrylic Glazes™

These clear acrylic mediums are designed to be diluted with water and applied as an overcoat to a painted surface or they can be mixed with the paints for additional binder strength. Rosco Clear Acrylics are compatible with all of Rosco's scenic paint systems and most other water extendable paints. They also serve as a binder for dry pigments and bronzing powders.

No. 55801 Clear Gloss
No. 55811 Clear Flat

Note: Add 0640 to the product number for Five Gallons, 0128 for One Gallon.

ColorCoat™

A durable, fast-drying water borne acrylic enamel that has excellent interior and exterior durability. ColorCoat's high gloss finish has superior gloss retention, ensuring a "like-new" finish for years to come. Ideal for use on most scenic surfaces as well as metal, wood, concrete and brick. ColorCoat is also an excellent choice for decks and floors due to its high abrasion resistance. It dries to the touch in one hour and cleans up easily with soap and water.

Available in: 3.79L and 0.946L

No. 5620 Clear
No. 5621 Clear Satin
No. 5622 White
No. 5624 Lemon Yellow
No. 5625 Orange
No. 5626 Bright Red
No. 5627 Dark Red
No. 5628 Forest Green
No. 5629 Emerald Green
No. 5630 Cerulean Blue
No. 5631 Prussian Blue
No. 5632 Burnt Umber
No. 5633 Raw Umber
No. 5634 Black
No. 5635 Flat Black
No. 5636 Aluminum

No. 5600 Test Kit



NEW!

Premiere Clear

Rosco Premiere Clear is an advanced, water-borne urethane coating suitable for sealing and protecting painted finishes, floors, and high-traffic surfaces. When cured, this clear finish provides long-lasting durability, hardness, and abrasion resistance in an environmentally safe, VOC-compliant coating. Premiere Clear is virtually odorless and may be thinned with water. In addition to protective top coats, Premiere Clear is excellent for use in faux finish or glazing applications. Perfect for almost any project in stage, film, and commercial arenas.

No. 150 06830 0032 Premiere Clear Flat 0.946L
No. 150 06830 0128 Premiere Clear Flat 3.79L
No. 150 06820 0032 Premiere Clear Satin 0.946L
No. 150 06820 0128 Premiere Clear Satin 3.79L
No. 150 06810 0032 Premiere Clear Gloss 0.946L
No. 150 06810 0128 Premiere Clear Gloss 3.79L



Tough Prime™

Rosco offers a unique water-based primer with new and improved adhesion properties that allow it to bond to the hard-to-prime scenic materials found in every scene shop. Tough Prime covers just about any surface, including PVC pipe, aluminum, foams and concrete floors, as well as wood and foam core. This quick drying, acrylic emulsion primer dries to a tough, durable coating which can be painted over with any paint and is excellent for both interior and exterior use.

No. 60400517 Tough Prime White – 3.79L
No. 60400519 Tough Prime White – 18.95L
No. 605517 Tough Prime Black – 3.79L
No. 605519 Tough Prime Black – 18.95L



CrystalGel™

Rosco CrystalGel is a non-toxic, water-based material which provides a clear, plastic-like coating on virtually any surface used in modern stagecraft. It air dries quickly — usually within hours — to a flexible, translucent surface. When dry, it can be painted with any Rosco scenic paint, or carved, or safely rolled without cracking or peeling. Such products as sand, sawdust or clay can be added to it to create unique textures.

No. 150 07400 0128 3.79L
 No. 150 07400 0640 18.95L
 Call Rosco for a sample.



Foamcoat™

Rosco Foamcoat is a water-based, flame retardant, protective coating for all rigid foams. An acrylic slurry the consistency of wet plaster, Foamcoat dries to a super hard durable coating that resists chipping and cracking, yet can be sanded smooth or carved with detailing. It is especially useful on scenery or props that receive excessive abuse or need to last for extended tours. Foamcoat is also a superb texturing agent that can be used to create custom patterns like bark and stone work and is even durable enough to be used on floors. It is fire retardant and weather resistant.

No. 60710017 3.79L
 No. 60710021 13.26L
 Call Rosco for a sample.



Flexcoat™

Rosco Flexcoat is a flexible, non-toxic, water-based coating for polyurethane and polystyrene foam. Its 100% acrylic formulation provides excellent adhesion to a wide variety of substrates. Flexcoat contains no plasticizers, so it will not become brittle with age or exterior exposure. It is compatible with all Rosco paints used either as tints or surface coatings. Flexcoat is weatherproof and fire retardant, providing one coat protection for all your theatrical applications.

No. 60712017 3.79L
 No. 60712019 18.95L
 Call Rosco for a sample.



FlexBond™

Rosco FlexBond is a clear, flexible scenic glue which bonds many porous and non-porous scenic materials. Rosco FlexBond dries to a clear, hard, yet pliable coating that does not suffer from the "tackiness" common in many other flexible glues — even after those glues have had days to dry! And unlike ordinary "white" glues which crack and break when flexed, the adhesive bond of Rosco FlexBond remains extremely pliable and strong even as the materials bend and deform. Rosco FlexBond is water-based and safe to use.

Available in 3.79L or 18.95L.

No. 60750017 3.79L
 No. 60750019 18.95L

Roscoflamex™

Rosco's complete range of flame retardants serves virtually every need. The range includes products for treating a full spectrum of theatrical materials from non-absorbent synthetics to wood and the traditional natural fibers. All products are approved by either the New York State Board of Standards and Appeals or the California State Fire Marshall and have been tested in accordance with the NFPA 701 and/or ASTM E-84 standards.

Each product is easy to apply to the substrate by either brush, spray or immersion. These products are not appropriate for use on costumes or clothing where there is direct contact with skin. Flamex should not be used with metallic paints.



Roscoflamex C26™

An improved version of Rosco's original flame retardant for cotton muslin. By adding 2 or 3 parts water, each 3.79L yields 13.26L of economical flame retardant. The "C26" identifies the cotton formulation and should be specified when ordering. Tested in accordance with NFPA 701.

No. 792617 3.79 Litres

Roscoflamex S33™

A formulation for treating synthetics including polyester, nylon, acrylic, rayon and a variety of blends. The liquid is premixed and ready for use. Specify "S33" when ordering. Tested in accordance with NFPA 701.

No. 793317 3.79 Litres

Roscoflamex W40™

Rosco's flame retardant for raw wood. The liquid is premixed and ready for use. Specify "W40" when ordering. Tested in accordance with ASTM E-84.

No. 794017 3.79 Litres

Roscoflamex P50™ Paint Additive

The latest addition to Rosco's range of flame retardants makes flameproofing your props and scenery easier than ever. This pre-measured container of clear liquid can be added directly to one fluid gallon of water-based Rosco paint turning that paint into a flame retardant coating. Perfect for backpainting hard scenery, Roscoflamex P50 can even be added to Rosco Clear Acrylic Glaze to create a fire retardant clear sealer. Roscoflamex P50 contains no pigments and will not alter the colour of your paint. Tested in accordance with ASTM E84.

No. 795012 355ml
No. 795024 Case of 12 x 355ml



Do not use Roscoflamex with metallic paints.

Choose the right Flamex for your job — see the Flame Retardant Chart on the Rosco web site:

www.rosco.com/uk/technotes/scenic/flamex_choosing.asp

www.rosco.com/uk/scenic/index.asp

Off Broadway Paint Kit

23-piece kit contains 29 mil samples of each Off Broadway colour plus Clear Flat and Clear Gloss.
No. 5300

Supersaturated Paint Kit

28-piece kit contains 29 mil samples of each Supersaturated colour (neutral base not included).
No. 25995

Fluorescent Paint Kit

9-piece kit contains 29 mil samples of the range of fluorescent paints.
No. 5700

ColorCoat Test Kit

14-piece kit contains 29 mil samples of each colour.
No. 5600

VividFX Sample Kit

13-piece kit contains 29 mil samples of the entire VividFX range of colours.
No. 6200

ClearColour Test Kit

5-piece kit contains 29 mil samples of all the ClearColour colours.
No. 150 06600 OKIT

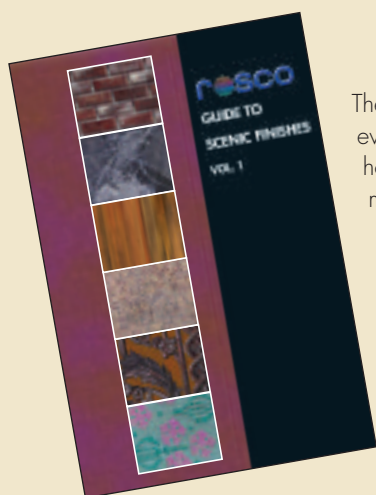
Rosco Paint Apron

Rosco's new shop aprons have been specially designed to meet the needs of scenic artists. The three quarter length chef's apron protects the user from stains and splatters so familiar in scene shops, while allowing full mobility. Three deep pockets are included for carrying pens, marking tools, scale rules, and other portable equipment so vital to the scenic artist. The aprons are stain-resistant, ProDura treated 65% poly-cotton twill. A fully adjustable neck strap allows one size to fit all.

No. 150 0800A PRON



A SCENIC ARTIST'S BEST FRIEND . . . AND IT'S FREE.



The Rosco Guide To Scenic Finishes is an excellent compilation of techniques scenic artists everywhere use to achieve realistic finishes in their work. It details which products to use and how to apply them. Included in this compilation are such widely used finishes as simulated marble, wood grains, brick walls, wallpaper, granite and even rust.

You can download a copy of the Rosco Guide To Scenic Finishes from the Rosco web site or you can get a copy from any Rosco office or wherever you buy Rosco paints and coatings.



DigiComp is Rosco's trade name for fabric, paint and tape precisely crafted to allow seamless compositing for film, video and digital use. In the modern compositing or matting process, images are overlaid on a surface for acceptance by a film or video camera. The success of the composited image depends directly on the luminance or brightness as well as the chroma or colour purity of the matte background. That's why backgrounds of DigiComp materials are so useful for film or television professionals.

DigiComp fabrics are 100% cotton materials impregnated with blue or green colour precisely matched to the DigiComp paints and tape. The paints are carefully developed pigments in a flexible vinyl acrylic binder for adhesion to a wide variety of substrates. The DigiComp tapes are non-reflective gaffers tapes which will not leave a sticky residue when removed.

DIGICOMP® CABLE

Rosco's precisely crafted DigiComp line of aircraft cable allows seamless compositing for flying scenery and actors in front of compositing screens created using DigiComp paint and fabric, freeing up hours of post-production time spent on removing black rigging cables.

The steel cable is coated with a flexible PVC vinyl that moves easily through any commonly used rigging equipment.

PRODUCT SPECIFICATIONS

2.4mm DigiComp cable
 1.6mm 7x7, coated diameter 2.4mm
 217kg rating, 152m spool

No. 850 57075 0938 DigiComp Green Cable
 No. 850 57055 0938 DigiComp Blue Cable

4.8mm DigiComp cable
 3.2mm 7x19, coated diameter 4.8mm
 917kg rating, 52m spool

No. 850 57075 1875 DigiComp Green Cable
 No. 850 57055 1875 DigiComp Blue Cable

6.4mm DigiComp cable
 4.8mm 7x19, coated diameter 6.4 mm
 1905kg rating, 52 m spool

No. 850 57055 2500 DigiComp Green Cable
 No. 850 57075 2500 DigiComp Blue Cable



DIGICOMP® PAINT

DigiComp Blue		DigiComp Green	
No. 57050128	3.79 Litres	No. 57070128	3.79 Litres
No. 57050640	18.95 Litres	No. 57070640	18.95 Litres

DIGICOMP® TAPE – 50mm x 50m

No. 57055050	DigiComp Blue Tape
No. 57075050	DigiComp Green Tape

DIGICOMP® FABRIC – 1.47m wide

No. 57054830	DigiComp Blue Fabric	9.14m Bolt
No. 57054860	DigiComp Blue Fabric	18.28m Bolt
No. 57074830	DigiComp Green Fabric	9.14m Bolt
No. 57074860	DigiComp Green Fabric	18.28m Bolt

DIGITAL COMPOSITING BLUE/GREEN DVD

With over 30 years experience in the manufacture of compositing products, Rosco has become a trusted resource for professional filmmakers the world over. More recently, however, the advent of on-line content web sites such as You Tube and MySpace, plus an unprecedented increase in the use of consumer editing products, means that the number of filmmakers looking to use Blue/Green screen effects has grown enormously.

To help the budding amateur, the filmmaking student and the less experienced professional, Rosco has teamed up with award winning Visual Effects Supervisor Peter Kuran to produce a DVD designed to answer all your basic questions and to lead you through the preparation for a Blue/Green production. The DVD looks at how best to light a Blue/Green scene, how to choose between Blue and Green and how to make best use of the full Blue/Green range of products. Supported by a series of reference pdfs, the Basic Blue Screen and Green Screen Photography DVD is now available from your Rosco dealer.



CHROMA FLOOR

Rosco's new Chroma Floor solves the long-standing problem of repainting your studio floor for every shoot. Chroma Key Blue on one side and Chroma Key Green on the other make Chroma Floor an ideal addition to any studio. Precise colour matching with Rosco Chroma Key paints allows for seamless compositing.

Manufactured of lightweight portable vinyl, the floor is easy to install, easy to clean and easy to maintain. Chroma Floor is also great for location shots.

Width: 1.6m	Length: 40m
Thickness: 1.3mm	Weight: 113.40kgs per roll
Colours:	Blue/Green Reversible

No. 300 097 206 301 Blue/Green Chroma Floor

Video Paint Ultimatte®

Rosco Ultimatte® Paints are the approved Ultimatte® Paint System. These paints were designed in conjunction with the Ultimatte® technical staff to meet the requirements of their keying effects systems. Super Blue is a purer blue designed for use in film production. Vinyl acrylic paints can be used on nearly any surface.



Available in 3.79 Litres

- No. 57201 Ultimatte® Blue
- No. 57211 Ultimatte® Green
- No. 57221 Ultimatte® Super Blue

Ultimatte® Colours

	Red	Green	Blue
Blue	22	40	82
Green	29	84	36
Super Blue	7	18	72

These values were measured with an Ikegami EC-35 camera with Plumbicon tubes. The iris was set so that an 89.9% reflective chip on a Porta Pattern 11 step chip chart was at 100 IRE units, the gamma was set to 0.45 and the knee circuit was turned off. Different cameras may yield different levels even under the same conditions.

Chroma Key™

Rosco Chroma Key Paints have been specifically formulated to provide high luminance values and colour saturation for keying effects. The acrylic colours provide high build, one-coat coverage for use on nearly any surface.

Available in: 3.79L and 18.89L



- No. 57101 3.79L Chroma Key Blue Paint
- No. 5710105 18.95L Chroma Key Blue Paint
- No. 57111 3.79L Chroma Key Green Paint
- No. 5711105 18.95L Chroma Key Green Paint
- No. 2420004 Chroma Key Blue Material
- No. 2420005 Chroma Key Green Material
- No. 2420006 Chroma Key Tape Blue 50mm x 50m
- No. 2420007 Chroma Key Tape Green 50mm x 50m
- No. 300 09720 6301 Chroma Key Floor Blue/Green

	Luminance	Vectroscope Phase Angle
Blue	52	342
Green	57	242

TV Paint™

Specifically formulated for the sensitive contrast requirements of standard television systems, this versatile acrylic paint can be applied to nearly any surface and comes ready to use right out of the bucket. TV White and Black are completely intermixable and allow the user to achieve intermediate greys. Featuring one-coat coverage, this system dries to a matte, non-reflective finish and allows for easy touch-up.



TV WHITE – A neutral grey that meets the specifications for 60% reflectance (maximum brightness intended for transmission).

No. 573517 3.79 Litres

TV BLACK – A rich, matte black that meets the specifications for 3% reflectance (minimum brightness intended for transmission).

No. 574017 3.79 Litres

Sure Clamp™

The Sure Clamp has a grip range of 3.18cm to 5cm and is used to hang lighting fixtures or scenery directly to pipes. An extra-secure substitute for the standard C-Clamp, it closes automatically when weight is hung on it and is further secured by a hand knob which requires no tools for adjustment.

No. 850 78020 0000 Sure Clamp



Sure Clamp

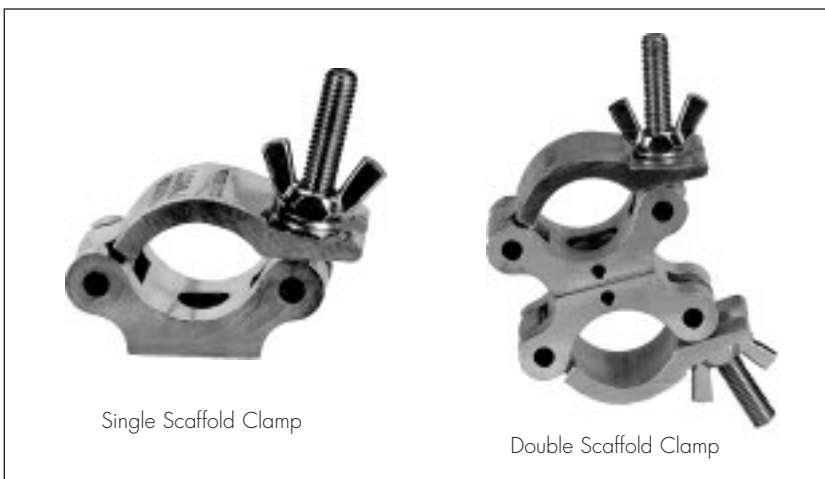
Scaffold Clamps

Rosco's Scaffold Clamps are manufactured using high tensile strength aluminum extrusion. The clamps are manufactured to exacting specifications ensuring consistent high performance. All bolts and wing nuts are zinc plated for maximum durability. Rosco Scaffold Clamps have a safe working load of 750Kg.

Single Scaffold Clamp for 5cm pipe is available with either a 9.5mm mounting bolt or a 12.7mm hex head mounting bolt.

No. 857SICLMPWOL Single Scaffold Clamp, 9.5mm bolt

No. 857SWCLMPWOL Swivel Clamp



Single Scaffold Clamp

Double Scaffold Clamp

Flicker Candles™

Designed as an alternative to flame candles, Rosco Flicker Candles are the most realistic candles you and your audiences have ever seen. They look and act just like the real thing and are virtually indistinguishable from the real thing . . . right down to the dripped wax. Most importantly, they are powered electrically, so they don't present potential hazards of using live flames. A simple 9-volt AC Adaptor allows you to raise or lower the dimming level on the Flicker Candles.

Professional Range Candle

This range of Flicker Candles simulates the natural flicker and have a small bulb attached to the unit to give the realistic glow of a flickering candle.

- 25429000 Church Candle - basic unit (40mm diameter translucent tube)
- 25429001 Church Candle with 45cm long white stem and flying leads 225mA
- 25429004 Candle basic unit with flying leads
- 25429005 Candle with 20cm long white stem and flying leads 150mA
- 25429006 Candle with 20cm long white stem, on/off switch & battery connector
- 25429003 Wee-Willie-Winkie saucer with on/off switch & battery connector
- 25429007 Three arm candelabra with on/off switch and battery connector

Classic Range

This range of flicker candles consists of standard candle units with the natural flickering flame and can be operated from either batteries or power supply units.

- 25428901 Candle - Basic unit (20mm diameter tube)
- 25428902 Candle with 20cm long white stem and flying leads 90mA
- 25428903 Hand held candle with 20cm long white stem, on/off switch and battery connector
- 25428913 Converted storm/hurricane lantern with on/off switch and battery connector
- 25428914 Converted storm/hurricane lantern with flying leads 90mA
- 25429002 Classic single candlestick with flying leads 90mA
- 25428904 Classic three arm candelabra with on/off switch and battery connector
- 25428905 Candle in a bottle with on/off switch and battery connector

Power Supplies

Some candles may be operated from either batteries or mains DC PSU but must be loaded according to the recommendations.

- 25429010 Mains power supply for 1 Classic Candle 90mA to 100mA
- 25429020 Mains power supply for 3 Classic Candles or 1 Professional 200mA to 300mA
- 25429030 Mains power supply for 25 Classic or 10 Professional Candles 1A to 3A

Dimmable!
with 9 Volt
AC adaptor only



On stage, or even on camera, Flicker Candles look and act just like the real thing.



Actual bases can differ slightly than those shown in the photo.



Dance Floor

This highly portable vinyl floor is excellent for situations where a permanent dance floor cannot be installed. Dance Floor is lightweight (less than 2.85kgs per linear metre (114kgs per bolt) and flexible, so it can be rolled and unrolled as needed. This makes the floor ideal for situations such as touring dance companies and theatres without a permanent dance floor. The matte non-skid finish provides the controlled slip dancers require. Dance Floor is reversible with black on one side and your choice of white or grey on the other. Floor thickness is 1.3mm, width is 1.6m and it is sold by the linear metre up to 40m long.

Installation – Use Rosco Vinyl or Double Stick Tape only.

No. 300 08720 630	Black/Grey 1.6m x linear metre
No. 300 08723 6301	Black/White 1.6m x linear metre
No. 300 09720 6301	Blue/Green Chroma Floor 1.6m x 40m

Also available by special order in full rolls only, red/tan and blue/black.



Adagio™

Adagio™ is an excellent floor for all forms of dance and dance instruction, including tap, ballet and modern. Its heavy duty, vinyl surface is both tough and durable enough to handle tap and other hard shoe dance styles. Yet it is supple enough to be the ideal surface for ballet and modern dance styles. Adagio travels well as a portable floor for touring, and since it is dimensionally stable, it is suitable for permanent or semi-permanent installation. Weight is 113,4kgs. per roll. Floor thickness is 1.5mm, width is 1.6m and it is sold by the linear metre up to 31m long.

Installation – Portable, Semi-Permanent, Permanent.

No. 87862214	Black 1.6m x linear metre
No. 87862219	Black 1.6mx 31m metre
No. 87863514	Grey 1.6m x linear metre
No. 87863519	Grey 1.6m x 31m metre

Adagio Tour™

Adagio Tour is uniquely suited to those who need a tough, lightweight floor for percussive dance styles. Tour has been specially designed to lay flat quickly and provide a surface with terrific tap sound. The surface is also excellent for all other dance forms including ballet, modern, Irish and jazz.

Adagio Tour provides a matte, non-reflective surface that is ideal in all performance venues. Despite the tough surface, Adagio Tour is very flexible, assuring years of carefree rolling and re-rolling.

Weight is 2.70kgs per linear metre and 83.91kgs per bolt and is 31m long and 1.6m wide.

Installation: Semi-Permanent.

No. 300 08622	Black 1.6m x linear metre
No. 300 08622 5900	Black 1.6m x 31metre
No. 300 08635	Grey 1.6m x linear metre
No. 300 08635 5900	Grey 1.6m x 31 metret

Performance Floor

This durable, all-purpose vinyl floor is best for permanent or semi-permanent installations in studios, multi-purpose rooms, stages and showrooms—anywhere traffic is heaviest. Performance Floor's durability and abrasion resistance gives the floor the ability to stand up to the abuse of camera dollies, street shoes and ballroom dancing as well as being ideal for ballet. Available in black, white, light and dark grey. Performance Floor is .2.5mm thick and rolls measure 1.83m wide by 18.29m long, and weighs 127kgs per bolt. Cut meterage is not available.

Installation – For semi-permanent installation, use matching Rosco Vinyl tape or Rosco Double Stick tape. Consult a professional flooring contractor for advice on permanent installation. Use Rosco adhesives and floor seam welding thread only.

No. 8781035	Black
No. 300 73030 7200	White
No. 8781031	Light Grey
No. 300 73025 7200	Dark Grey



PortaBarre™

PortaBarre is exactly what the name describes, a truly portable ballet dance barre. Designed by dancers, PortaBarre is extremely lightweight, yet highly durable and stable. Rosco's PortaBarre uses an internal double button interlocking system, which makes assembly and disassembly possible in a matter of a few minutes, and it does not require tools or locking keys. Made from aluminum, PortaBarre is less than half the weight of comparably sized steel or wood barre systems. The 1.40m PortaBarre weighs only 6.80kgs. and is sold complete with a custom designed carrying case. The 2.74m PortaBarre, also sold with a carrying case, weighs only 11.34kgs. and can be extended to 3.96m with Rosco's optional 1.22m PortaBarre extension.

No. 300 09095 0108	2.74m barre with carrying case
No. 300 09095 0054	1.40m barre with carrying case
No. 300 09095 0048	1.22m extension for 2.74m barre

Cabriole™

Cabriole™ is a major breakthrough in stage and studio flooring. With cushioning between two reversible sides, Cabriole is a unique double-sided dance floor with black on one side and grey on the other. The matte finish helps prevent distracting reflections. Both sides offer the same non-skid finish designed for the controlled slip preferred by dancers. Now dancers can have cushioned comfort both in the studio and while on tour. Weighing 2.5kgs per linear metre, Cabriole is easily handled during transport. Floor thickness is .1.5mm width is 1.4m and it is sold by the linear metre up to 43.9m long.

Installation – Use Rosco Vinyl or Double Stick Tape only.

No. 8782014	Black/Grey 1.4m x linear metre
No. 8782019	Black/Grey 1.4m x 43.9m
No. 8782114	Black/White 1.4m x linear metre
No. 8782119	Black/White 1.4m x 43.9m

Studio Floor

This ultra matte, black vinyl floor is ideal as a staging floor for ballet, theatre, or any application where a light-absorbing surface is needed. Studio Floor is not appropriate for heavy traffic or other kinds of dance. Available in ultra-flat black only. Studio Floor is 2 mm thick and rolls measure 1.83m wide by 18.29m long, weighing 113.40kgs. Cut meterage is not available.

Installation – For semi-permanent installation, use matching Rosco Black Gaffer Tape or Rosco Double Stick Tape. Consult a professional flooring contractor for advice on permanent installation. Use Rosco adhesives and floor seam welding thread only.

No. 300 78035 7200	Special Order only
--------------------	--------------------

Arabesque™

If cost is a primary concern for your studio flooring, Arabesque should be your first choice. Arabesque is, on a cost-per-square-foot basis, Rosco's most affordable multi-purpose floor. That makes it a wonderful choice for such semi-permanent locations as studios in rented quarters. because it's a heavy duty homogenous vinyl, it is just as suitable for permanent installations. Arabesque is manufactured with a marbled finish, adding both a note of elegance and the practical advantage of helping to hide scuff marks. Floor thickness is 2mm, width is 2m. It can be specified by the linear metre up to 20m.

Installation – For semi-permanent installation, use matching Rosco Gaffer tape or Rosco Double Stick tape. Consult a professional flooring contractor for advice on permanent installation. Use Rosco adhesives and floor seamwelding thread only.

No. 300 8222	Marble Black	2m x linear metre
No. 300 8222 7900	Marble Black	2m x 20m
No. 300 8235	Marble Grey	2m x linear metre
No. 300 8235 7900	Marble Grey	2m x 20m
No. 300 8218	Marble Tan	2m x linear metre
No. 300 8218 7900	Marble Tan	2m x 20m

Show Floor

This super glossy vinyl floor is perfect for special events, commercials and fashion promotions. It will add sparkle and glamour to any event. Show Floor is not recommended for heavy traffic or for permanent installation. It is available in high gloss black and white. Show Floor is 2 mm thick, and each roll measures 1.83m wide by 18.29m long, weighing 124.74kgs. Cut meterage is not available.

Installation – For semi-permanent installation, use Rosco Clear Vinyl tape or Rosco Double Stick tape.

No. 300 74035 7200 Black
 No. 300 74030 7200 White
 No. 300 74036 7200 Red
 Special Order only

Roscoleum Floor

Roscoleum is Rosco's linoleum dance floor, suitable for virtually any form of dance, including tap, flamenco and Irish dance. An improved version of the traditional "Battleship Linoleum", Roscoleum is a heavyweight linoleum, 2.5mm thick, 2m wide and 32 m long. Cut meterage is not available. Weight is:192.78kgs. per roll.

Installation – Permanent. For permanent installation, a professional flooring contractor should be consulted using Roscoleum adhesive and Roscoleum welding thread.

No.87812219 Black 2m x 32m
 No. 87813519 Grey 2m x 32m



Roscotiles

This unique, rugged floor product is 100% vinyl in .914m x .914m squares, making it easy to pick up and put down. Originally designed for video production facilities, each 3 mm thick, 5.44kgs tile is designed to lie flat for temporary, as well as permanent installations. While Roscotile is designed not to break or crack during typical use, the tile format makes for easy replacement should one or more tiles be gouged by a sharp object. The tiles typically have a low luster sheen, but can be buffed to a high gloss using Rosco Floor Wax. Available in White, Black and TV Grey.

Installation – For temporary installation, tiles will lie flat on their own, although Rosco floor tape may be used to secure the edges. For permanent installation, a professional flooring contractor should be consulted. All tiles should be stripped of their shipping coating with professional cleaning equipment and Rosco Heavy Duty Floor Cleanser and be protected with Rosco Floor Wax. For permanent installations, use only Rosco adhesives.

No. 8726 White
 No. 8725 Black
 No. 8727 TV Grey

Royale™ Floor

Royale™ is Rosco's premier foam-cushioned floor for stages and studios, now with improved surface. Made of a very hard-wearing, slip-resistant vinyl and mounted on a firm foam backing, Royale is a perfect floor for dance and performance. Excellent as a portable floor for touring, weighing 4kgs per linear metre, 99.8kgs per bolt. Royale also incorporates a mineral fiber layer, making it dimensionally stable for permanent or semi-permanent installation. Royale is perfect over wood, tile or any smooth surface. Floor thickness is 3mm, width is 2m and it is sold by the linear metre up to 25m long.

Installation – Portable, Semi-Permanent, Permanent.

No. 300 08522 Black 2m x linear metre
 No. 300 08522 7900 Black 2m x 25m
 No. 300 08535 Grey 2m x linear metre
 No. 300 08535 7900 Grey 2m x 25m

Special order only

Rosco SubFloor With WaveLock™ Technology

You Can Install It Yourself!

Rosco SubFloor was developed and tested by dancers to ensure the perfect combination of resilience (spring or bounce) with stability. It is flexible enough to absorb the energy from a dancer's impact but provides the right amount of resistance for dance movements ranging from ballet to tap and including folk, modern, flamenco and Irish dancing.

Most users will be able to install the Rosco SubFloor on their own. The 1.07m x 1.07m panels lock into each other with the unique WaveLock™ design. Perimeter pieces, 11.43cm wide, lock the entire floor together. Rosco SubFloor systems can be bolted to concrete or wood floors and can also be removed and re-used in case of a change of venue. Panels weigh only 18.14kgs each.



Semi-Permanent Studio System Components

No. 300 08000 4242	1.07m x 1.07m x 5.08cm Panel
No. 300 08010 0042	11.43cm x 1.07m x 5.08cm Perimeter
No. 300 08010 0084	11.43cm x 2.13m x 5.08cm Perimeter
No. 300 08015 0000	11.43cm x 53.34 x 5.08cm Corner
No. 300 08016 0000	11.43cm Inside Corner
No. 300 08020 0000	53.34cm x 1.07m x 5.08cm Ramp
No. 300 08021 0000	53.34cm Corner Transition Ramp
No. 300 08030 1242	30.48cm x 1.07m Custom Top Perimeter
No. 300 08030 1284	30.48cm x 2.13m Custom Top Perimeter
No. 300 08030 2442	61cm x 1.07cm Custom Top Perimeter
No. 300 08030 2484	61cm x 2.13m Custom Top Perimeter

Note: The installation of a vapour barrier is recommended when installing SubFloor over concrete.



Floor Cleaners

Rosco offers three different floor cleaning products, designed to meet every need. All cleaners available in 1 Litre or 3.79 Litres

ROSCO ALL PURPOSE FLOOR CLEANER

Designed for the routine, regular cleaning of all Rosco vinyl floors.

No. 300 09116 0034 1 litre

No. 300 09116 0128 3.79 litres

ROSCO HEAVY DUTY FLOOR CLEANER

For stripping and deep cleaning of Rosco floors.

No. 300 09112 0034 1 litre

No. 300 09112 0128 3.79 litres

All cleaners and wax are available in:

1 litre case (14 liters)

3.79 litre

Granulated Floor Cleanser

Granulated, dissolvable chemical for cleaning all Rosco flooring surfaces.

No. 871010 0.91kgs bag



Floortapes

For installing floors in temporary situations.

No. 851 05014 4833	Black Vinyl tape 48mm x 33m
No. 851 05015 4833	White Vinyl tape 48mm x 33m
No. 851 05016 4833	Grey Vinyl tape 48mm x 33m
No. 851 05013 4833	Clear Vinyl tape 48mm x 33m
No. 851 08740 4825	Roscofloor Double Stick tape 48mm x 25m

Rosco also has Gaffers Tape available for temporary installations.

Adhesives

For permanent installations. Consult a professional flooring contractor before installation.

LATEX ADHESIVE NO. 555

For most porous surfaces, including concrete which is above grade.

No. 850017	3.79L (weighs 4.5kgs)
No. 850020	11.37L Pail (weighs 14.06kgs)

EPOXY ADHESIVE NO. 300

For non-porous surfaces and concrete below grade.

No. 830017	3.79L (weighs 16.8kgs)
------------	------------------------

Coverage is approximately 10.21 sq metres per 3.79 Litres

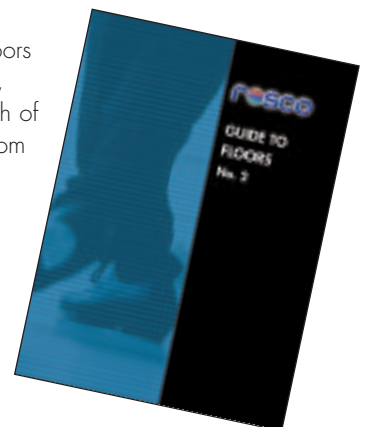
Welding Threads

Welding threads are available to aid in permanent seam sealing by professional contractors. Rosco has welding threads available for Adagio, Roscoleum, Arabesque, and Performance Floor.

Welding threads are colour-matched to the flooring

Floor Catalogue

Be sure you have Rosco's Guide to Floors catalogue on hand. It provides details, descriptions and specifications for each of the floors and accessories available from Rosco. Available free for the asking.





Caution Tape

This 48mm vinyl tape has alternating bands of bright yellow and black. It is perfect for marking backstage areas that are off-limits or dangerous. 16.5m roll.

No. 50560010 Black/Yellow

Glow Tape

This glow-in-the-dark tape is ideal for marking low light areas. It glows to a yellow-green colour that can remain illuminated for hours. Each roll is 24mm wide and manufactured with a strong adhesive, making it durable enough for high traffic areas.

No. 500005 5m roll
 No. 500010 10m roll
 No. 500015 30m roll



Gaffers Tape

Rosco Gaffers Tape is manufactured with a premium quality cotton substrate, coated with heavy-duty vinyl. Our rubber based adhesive has high tack with excellent adhesion but will not leave a sticky residue. It's non-reflective backing and easy tearing make it the perfect choice for all your entertainment needs. Rolls measure 48mm x 50m

No. 851 42331 4850 Black
 No. 851 42332 4850 White
 No. 851 42333 4850 Grey
 No. 851 42334 4850 Brown
 No. 851 42338 4850 Electric Blue
 No. 851 42339 4850 Red
 No. 851 42340 4850 Blue
 No. 851 42341 4850 Green
 No. 851 42342 4850 Yellow

Spike Tape

This 12mm cloth tape is available in five colours. It is ideal for marking location of actors and scenery on stage floors. A strong cloth backing makes removing the tape at the end of a production easier than removing vinyl spike tape. 25m roll.

No. 50521010 Red
 No. 50522010 Yellow
 No. 50523010 Blue
 No. 50524010 Green
 No. 50525010 White

TecStretch™ Film

TecStretch is an excellent solution for anyone who needs to secure cable, rope or extension cords safely and without leaving a sticky residue. Like Shrinkwrap™ in tape form, this 80 gauge film secures a wide variety of materials and doesn't leave a residue because the film sticks only to itself. TecStretch has a 1:3 stretch ratio, so a 76.2m roll will generally yield up to 182.88m of usable material.

Roll size: 2.5cm wide x 76.2 m. Sold in sleeves of six rolls or cases of 72 rolls. Available in black, white, blue, red, green, and yellow.

TecStretch 6-Roll Sleeves.
 No. 290 103 006 006 Assorted
 No. 290 103 106 006 Black
 No. 290 103 206 006 White
 No. 290 103 306 006 Blue
 No. 290 103 406 006 Red
 No. 290 103 506 006 Green
 No. 290 103 606 006 Yellow

TecStretch 72-roll Cases
 No. 290 103 006 072 Assorted
 No. 290 103 106 072 Black
 No. 290 103 206 072 White
 No. 290 103 306 072 Blue
 No. 290 103 406 072 Red
 No. 290 103 506 072 Green
 No. 290 103 606 072 Yellow



Showcloth™

An extraordinary weave of thread and self-extinguishing plastic strips, this is an elegant, shimmering fabric with a soft hand and beautiful drape. Showcloth has a selvedge edge for easy sewing.

1.19m x 9.14m Roll

1.19m x 100.6m Bolt

No. 62101	White/Gold
No. 62102	Black/Gold
No. 62103	White/Silver
No. 62104	White/Iridescent
No. 62105	Black/Silver
No. 62106	Black/Black
No. 62107	Black/Iridescent
No. 62108	Matte Silver/White
No. 62109	Matte Silver/Black
No. 62110	Matte Gold/White
No. 62111	Matte Gold/Black

Slit Drape

This Rosco version of slash curtain picks up light and reflects it in an exciting fashion. Overlapping 3.175mm strips of durable, flame retardant vinyl make the effect of Slit Drape unique.

Available in: 2.4m, 4.9m and 7.3m lengths x 91.44 cm wide

No. 2610	Solid Black
No. 2609	Solid Silver
No. 2625	Solid Gold
No. 2608	Black/Silver
No. 2602	Black/Gold
No. 2600	Black/Diffraction
No. 2606	White/Diffraction
No. 2601	Silver/Diffraction
No. 2630	Iridescent
No. 2634	Silver/Iridescent/Gold
No. 2636	Silver/Gold/Diffraction
No. 2637*	Fluorescent Chartreuse
No. 2638*	Fluorescent Pink
No. 2639*	Fluorescent Orange
No. 2640*	Fluorescent Blue
No. 2641*	Mixed Fluorescent

* Special order only

Shimmer Scrim™

Shimmer Scrim is a unique combination of thread and plastic film woven into a theatrical fabric without peer. This self-extinguishing fabric may be used for traditional scrim effects or as a shimmering, airy drape. It has a selvedge edge for easy sewing.

119.4cm x 9.14m

119.4cm x 100.6m

No. 2051	White/Iridescent/Gold
No. 2056	White/Clear/Iridescent
No. 2055	White/Iridescent/White
No. 2057	Black/Clear/Silver
No. 2005	Black/Clear/Iridescent
No. 2059	Black/Clear/Black
No. 2061	Black/Gold/Clear

Glamé™

An old favorite gets a new look. The Rosco Glamé line has been improved and expanded. We have improved the weave; making it fine, flat and even, and expanded the range of available materials to include diffractions and iridescents for stunning scenic effects on stage or film. Glamé is still woven from a durable, lightweight, self-extinguishing plastic film making it an excellent choice for theatrical, or any entertainment venues.

Available in: 1.22m x 9.14m rolls.
100m bolts also available.

No. 2006	Silver
No. 2009	Gold
No. 2012	Silver/Black
No. 2013	Gold/Black
No. 2014	Gold/Silver
No. 2032	Silver/Diffraction
No. 2033	Gold/Diffraction
No. 2034	Clear/Diffraction
No. 2035	Iridescent/Diffraction
No. 2041	Razzle Dazzle
No. 2045	Black
No. 2052	Black/Iridescent
No. 2053	Silver/Iridescent
No. 2054	Gold/Iridescent



Glamé, widely used as a decorative material in clubs, theatre and special events, reflects light beautifully.

Shrink Mirror™

Rosco's Silver Shrink Mirror is a lightweight substitute for heavy glass mirror. This metalized plastic laminate is designed to be mounted to a frame and heat shrunk for superior optical reflectance. 1.37m x 9m

No. 3909 Silver Shrink Mirror



Mirrors

A variety of reflective surfaces in a metalized plastic format.

No. 390602 Flexible Silver (1.22m x 9.15m)
 No. 392502 Thin Silver (1.37m x 9.15m)
 No. 392702 Thin Gold (1.37m x 9.15m)
 No. 393002 Rigid Gold (1.22m x 9.15m)
 No. 393102 Rigid Silver (1.22m x 9.15m)

Call to get a
Designer Products
 sample swatchbook.

Breakaways

Plastic breakaways shatter realistically and are specially packaged to assure that they are delivered intact. Bottles are available in Amber, Green or Clear. Bottles are shipped with labels unattached for easy customisation. Minimum order: 6 breakaways. (Bottles must be the same colour.)

No. 80011 Beer Bottle
 No. 80031 Whiskey Bottle
 No. 80031G Whiskey Bottle Green
 No. 80051 Wine Bottle Clear
 No. 80051G Wine Bottle Green
 No. 80061 Water Glass
 No. 80071 Paris Glass
 No. 80041 Champagne Bottle Dressed
 No. 80091 Champagne Bottle
 No. 80021 Coke Bottle
 No. 80081 Champagne Flute



Other breakaways available to order, please contact Rosco for details.

Roscolab Ltd refuse liability for the safe carriage of these goods.

Glitter

RoscoGlitter, in .397mm hexagonal chips, is uniquely suited for production applications. The chips are brilliant under stage lights and can be sprinkled on or mixed directly into Clear Gloss or Flat Acrylic for easy application. Small is 114g., large is 0.45kgs.

No. 4028901 Silver
 No. 4028911 Gold
 No. 4028931 Red
 No. 4028941 Sky Blue
 No. 4028951 Royal Blue
 No. 4028971 Green
 No. 4028981 Fuchsia
 No. 36002902 Pink Fizz
 No. 36002904 Blue/Green Iridescent

Metalix™

This durable metalized plastic material is available in a variety of colours and surfaces.

1.22m x 9m.

No. 390202	Silver Pebble
No. 397102	Soft Silver
No. 397202	Gold Pebble

Multi-Lens™

A laser etched plastic film with the 3-D look of glass lenses.

Pressure sensitive for easy mounting.

61cm x 4.6m

No. 294910	1/2" Silver
No. 294911	1/2" Blue
No. 294912	1/2" Red
No. 294913	1/2" Green
No. 294914	1/2" Fuchsia
No. 294915	1/2" Gold
No. 294916	1/2" Fluorescent Pink
No. 294920	2" Silver
No. 294921	2" Blue
No. 294922	2" Red
No. 294923	2" Green
No. 294924	2" Fuchsia
No. 294925	2" Gold
No. 294926	2" Fluorescent Pink

Diffractions™

Five exciting laser etched plastic films for prismatic effects. All the diffractions are adhesive backed.

61cm x 4.6m

No. 295622	Exotic Circles
No. 295722	Exotic Hex
No. 295822	Star
No. 296022	1/4" Mosaic
No. 296222	Horizontal Stripes

Sparklene™

Eleven glitter laminate plastic film colors for exciting effects.

Sparklene is pressure sensitive for easy mounting.

61cm x 4.6m

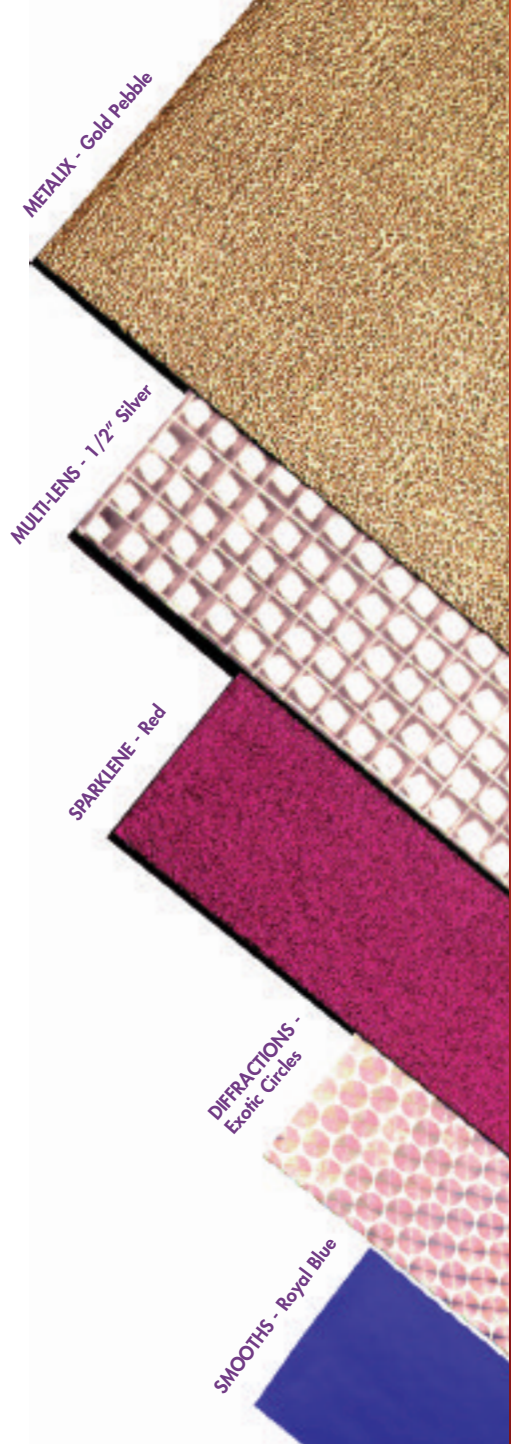
No. 03990	Silver
No. 03991	Blue
No. 03992	Red
No. 03993	Green
No. 03994	Fuchsia
No. 03995	Gold
No. 03961	Fluorescent Pink
No. 03963	Prism Silver
No. 03964	Blue/Green Iridescent

Smooths™

The smooth colors are pressure-sensitive for easy mounting.

61cm x 9.2m.

No. 397422	Bright Orange
No. 397522	Gun Metal Grey
No. 397622	Cherry Red
No. 398022	Royal Blue
No. 398122	Silver
No. 398322	Pink Fizz
No. 398522	Light Gold



- A** Acrylic Panels14
 Adagio™ Floor66
 Adagop™ Tour66
 All Purpose Floor Cleaner70
 Alpha 900 Fog Machine49
 Animation Discs38
 Arabesque Floor67
- B** Backdrops24
 Breakaways74
 Brushes57
 Butterflies15
- C** Cabriole67
 CalColor13
 CalColor Kit20
 Candles65
 Carbon Arc
 Control Filters14
 Caution Tape71
 Chroma Floor62
 Chroma Key Paints63
 ChromaSleeves17
 Cinedichro22
 Cinefoil16
 Cinegel10 - 20
 Cinegel Colour13
 Cinegel Diffusion12
 Cinegel Sampler Kit20
 Cinelux13
 ClearColour56
 ClearColor Test Kit61
 Clear Flat Acrylic58
 Clear Fog Fluid52
 Clear Gloss Acrylic58
 Coatings58
 Coldflow49
 ColorCoat58
 ColorCoat Test Kit61
 Color Correction Kit20
 Color Effects Kit20
 Colorine57
 Colorizer Gobos28
 ColorWaves31
 Controllers37
 CrystalGel59
 Custom Gobos27
 Custom iPro Slides43
 Custom Screens45
- D** Dance Floor66
 Daylight Conversion
 Filters10
 Delta 3000
 Fog Machine46
 Delta 6000
 Fog Machine47
 Delta Haze Fluid53
 Delta Hazer50
 Designer Products72-75
 Dichroic Filters21-22
 DichroFilm22
 Diffractions75
 Diffusion Kit20
 Diffusion, Material12
 DigiComp™62
 DigiComp™ Cable62
 Digital Backdrops24 - 25
 Digital Compositing DVD62
 DMX/DC Controller37
 DMX Iris39
 Donuts33
 Double Gobo Rotator36
 Dyed Grid Cloth12
- E** E-Colour+8
 Epoxy Adhesive No. 30070
- F** Fabric, Digital
 Compositing62
 Featherlight Colorizers28
 Filter Accessories23
 Filter Kits20
 Fire Retardants60
 Fitch brushes57
 Flame Retardants60
 Flamex60
 FlexBond59
 Flexcoat59
 Flexmirrors74
 Flicker Candles65
 Floor66-70
 Floor Adhesive70
 Floor Care70
 Floor Tapes70
 Floor Wax70
 Fluorescent Light Filters11
 Fluorescent Paint Kit61
 Fluorescent Paints56
 Fluorescent Sleeves17
 Foamcoat59
 Fog Machines46 - 51
 Fog Fluid52 - 53
 Free Flow Colorizers28
 Front Projection Screens45
- G** Gaffers Tape71
 Glamé73
 Glass gobos28 - 31
 Glazes58
 Glitter74
 Glow Tape71
 Gobos26-33
 Gobo Rotators36
 Gobo Holders32
 Gobo Video33
 Granulated Floor
 Cleanser70
- H** Heavy Duty Floor Cleanser70
 HMI Light Control
 Filters14
 Holders, Gobo32
 Hybrid Two-Fer42
- I** iCue Intelligent Mirror39
 Image Glass29
 Indexing Rotator36
 Infinity38
 iPro Image Projector™42
 iPro Slides43
 iPro Slide Film43
 IR/UV Glass Filter21
- K** Keystroke44
- L** Latex Adhesive No. 55570
 Lay-In Brushes57
 Lens Cleaner23
 Lens Tissue23
 Light Fog Fluid53
 Litepad40

- M** Metalix75
 Minusgreens11
 Mirrors74
 Model 1700 Fog Machine .48
 Model 1900 Fog Machine .48
 MR-16 Filter Holder22
 Multi-Lens75
- N** Neutral Density Filters11
- O** Off Broadway Paint54
 Off Broadway Paint Kit61
- P** Paint54 - 61
 Paint Apron61
 Paint, Digital Compositing ...62
 Paint Kits61
 Performance Floor67
 Permacolor Architectural
 Series21
 Permacolor Custom Colours .21
 Permacolor Dichroic
 Filters21-22
 Permacolor Frames22
 Permacolor Library Colours .21
 Permacolor Sample Kits22
 Permacolor Standard Colours .21
 Permacolor Technical
 Coatings21
 Photofoil16
 Plusgreens11
 Polarizing Filters14
 Portabarre67
 Power Supply Units41
 Premiere Clear58
 Prismatic30
 Projection Screen45
- Q** Quick Color Sleeves17
- R** Rear Projection Screens45
 Reflection Media15
 Roscoflamex60
 Roscoflamex C2660
- Roscoflamex P5060
 Roscoflamex S3360
 Roscoflamex W4060
 Rosco Fog Fluid52
 Roscoglo Paint57
 Roscoleum Floor68
 Roscolux6
 Roscopaks14
 RoscoShades19
 Roscotiles68
 RoscoView18
 Royale Floor68
- S** Safety Frames23
 Scaffold Clamps64
 Screens45
 Shimmer Scrim73
 Show Floor68
 Showcloth71
 Shrink Mirror74
 Slash Curtains72
 Slit Drape72
 Smooths75
 Sparklene75
 Spike Tape71
 Stage & Studio Fluid52
 Stainless Steel Gobos ..26 - 27
 Stippled Colorizers28
 Storage Drawers23
 Storaro Selection13
 Straw Correction10
 Spanfix45
 Studio Floor67
 SubFloor69
 Sun 85 Filters11
 Supergel4
 Super Heat Shield16
 Supersaturated Paint
 Concentrated Bases55
 Supersaturated Roscopaint ...55
 Supersaturated Paint Kit61
 Sure Clamp64
 Swatchbooks3
- T** Tape, Digital Compositing ...62
 Tec Stretch Film71
 Test Kits, Paint61
 ThermaShield16
 Tiles - Floor68
- Tough Prime58
 Tungsten Conversion
 Filters10
 TV Paints63
- U** Ultimatte Paints63
 Universal Iris Slot Holder ...32
 UV Blocking Filter21
 UV Filter16
- V** Variable Speed Controller ...37
 Video Paints63
 Vivid FX Sample Kit61
 VividFX Ultraviolet Paint56
 Vortex 360 Dual Rotator ...35
- W** Welding Threads70
 Woods Glass (uv filter)21
- X** X24 X-Effects Projector34

THE ROSCO SALES TEAM

Ron Knell

Business Development Manager
UK, Eire & South Africa
Mobile: +44 (0)7956 433215
knellr@rosco-europe.com

Steve Ramos

Business Development Manager
UK & Eire
Mobile: +44 (0)7985 489528
ramoss@rosco-europe.com

Richard McKitty

Sales Executive
UK
Mobile: +44 (0)798 4783700
mckityr@rosco-europe.com

Margie Heymann

Sales Manager
South East Europe
Mobile: +39 335 361311
heyman@dada.it

Andreas Dessloch

Business Development Manager
Germany, Russia, Middle East, S.W.Asia & North Africa
Mobile: +49 (0)172 5255174
desslocha@rosco-europe.com

Katrin Schlüter

Business Development Manager
Benelux, Switzerland, Austria, Northern & Eastern Europe
Mobile: +49 (0)160 8066550
schlueterk@rosco-europe.com

Joanna Shapley

Business Development Manager
France
Mobile: +44 (0)7931 173058
shapleyj@rosco-europe.com

Frank Lambrechts

Sales Representative
Benelux & N. France
Mobile: +32 (0)475 316511
lambrechtsf@rosco-europe.com

Roscolab Ltd

German Office:

Görlitzer Str.2, D-33758 Schloss Holte-Stukenbrock
Tel: +49 (0)5207 995989 Fax: +49 (0)5207 925 989

Netherlands Office:

Claus Sluterweg 125/1b, 2012 WS Haarlem
Tel: +31 (0)23 5288 257 Fax: +31 (0)23 5286 754

Italian Office:

Via Verdi N.4. 50122 Firenze
Tel: +39 055 243131 Fax: +39 055 0517394

Rosco Ibérica:

C/Oro 76 Polígono Industrial Sur, 28770 Colmenar Viejo
Madrid. Tel: +34 918 473 900 Fax: +34 918 463 634

Rosco Laboratories Inc:

52 Harbor View Avenue, Stamford, CT 06902, USA
Tel: +1 203 708 8900 Fax: +1 203 708 8919

1265 Los Angeles Street, Glendale, CA 91204
Tel: +1 818 543 6700 Fax: +1 818 662 9470

Rosco Laboratories Ltd:

1241 Denison St. No.44, Markham, Ontario L3R 4B4, Canada
Tel: +1 905 475 1400 Fax: +1 905 475 3351

Unit 107, 3855 Henning Drive, Burnaby, Vancouver V5C 6N3, Canada
Tel: +1 604 298 7350 Fax: +1 604 298 7360

Rosco do Brasil Ltda

Rue Antônio De Barros, 827, 03401-000 São Paulo-SP, Brasil
Tel: +55 11 2098 2865 Fax: +55 11 2098 0193

Rosco Australia Pty Ltd:

42 Sawyer Lane, Artarmon 2064, New South Wales, Australia
Tel: +61 2 9906 6262 Fax: +61 2 9906 3430



www.rosco.com

Kangley Bridge Road
Sydenham
London SE26 5AQ

Tel: +44 (0)20 8659 2300 Fax: +44 (0)20 8659 3153
E-mail: sales@rosco-europe.com

Also in: New York, Hollywood, Toronto, Madrid, São Paulo and Sydney